

# Kinetics of $\alpha$ -glucosidase inhibitory activity and phytochemical analysis of *Piper crocatum* Ruiz & Pav. leaves ethanol extract

*by* Muhammad Alfarabi

---

**Submission date:** 16-Mar-2022 11:55AM (UTC+0700)

**Submission ID:** 1785411203

**File name:** Publikasi\_M.Alfarabi\_5\_2020.pdf (716.29K)

**Word count:** 2544

**Character count:** 14298



## Kinetics of $\alpha$ -glucosidase inhibitory activity and phytochemical analysis of *Piper crocatum* Ruiz & Pav. leaves ethanol extract

Muhammad Alfarabi<sup>1</sup>, Maria Bintang<sup>2</sup>, Suryani<sup>2</sup>, Mega Safithri<sup>2</sup>, Waras Nurcholis\*<sup>3</sup>

<sup>1</sup>Department of Biochemistry, Faculty Medicine, Christian University of Indonesia, Jakarta 13630, Indonesia

<sup>2</sup>Department of Biochemistry, Faculty of Mathematics and Natural Sciences, Bogor Agricultural University, Bogor 16680, West Java, Indonesia

<sup>3</sup>Tropical Biopharmaca Research Center, Bogor Agricultural University, Bogor 16680, West Java, Indonesia

### Article History:

Received on: 05 Sep 2020

Revised on: 05 Oct 2020

Accepted on: 08 Oct 2020

### Keywords:

Acarbose,  
Diabetics,  
GC-MS,  
Phytochemical,  
*Piper crocatum*

### ABSTRACT

$\alpha$ -Glucosidase is an enzymes group that playing essential roles in the digestion of polysaccharide. Inhibitor of a-glucosidase can decrease polysaccharide digestion rate and therefore plays a significant function in preventing the development of diabetes (type 2). *Piper crocatum* Ruiz & Pav. is an essential herb applied traditionally in Indonesia to treat diabetes mellitus. This work evaluated the a-glucosidase inhibitory activity of *P. crocatum* leaves ethanol extract. Phytochemical component of the extract was also analyzed. The  $\alpha$ -glucosidase inhibitory activity of the *P. crocatum* leaves ethanol extract was examined by reacting its different concentrations with  $\alpha$ -glucosidase and *p*-nitrophenyl glucopyranoside. Kinetics of the  $\alpha$ -glucosidase inhibition was determined using a Lineweaver-Burke plot. Phytochemical in the extract was determined using GC-MS. Ethanol extract of *P. crocatum* leaves exhibited moderate  $\alpha$ -glucosidase inhibitory activity compared with acarbose. Phytochemical analyses showed the presence of stilbene, linolenic acid, phenol, phyto-steroid, and  $\alpha$ -tocopherol. The competitive action of *P. crocatum* leaves ethanol extract is due to its inhibitory effects on  $\alpha$ -glucosidase. The stilbene and phenol compounds indicated responsible for anti-diabetic activity from *P. crocatum* leaves ethanol extract.



### \*Corresponding Author

Name: Waras Nurcholis

Phone:

Email: [wnurcholis@apps.ipb.ac.id](mailto:wnurcholis@apps.ipb.ac.id)

ISSN: 0975-7538

DOI: <https://doi.org/10.26452/ijrps.v11iSPL4.4416>

Production and Hosted by

Pharmascope.org

© 2020 | All rights reserved.

### INTRODUCTION

Diabetes mellitus (DM) is a syndrome metabolite disease with significant mortality and characterized

by a high level of blood glucose (hyperglycemia) and dysfunction in insulin secretion and/or insulin action (Wilkinson *et al.*, 2019). In 2019, the DM prevalence in the world was an estimated 463 million (Saeedi *et al.*, 2019). It is also predicted that DM prevalence will reach 578 and 700 million in 2030 and 2045, respectively (Saeedi *et al.*, 2019). Generally, the three DM types are type I diabetes with insulin deficiency, type II diabetes with insulin resistance, and gestational diabetes (Zhang *et al.*, 2019). Hyperglycemia condition will produce diabetic complications, such as cardiovascular diseases (Khouja *et al.*, 2019), chronic kidney disease (Brugnara *et al.*, 2018), blurred vision (Sayin *et al.*, 2015), nephropathy (Elsayed *et al.*, 2019), anxiety and depression (Khalighi *et al.*, 2019), and

retinopathy (Gargiulo *et al.*, 2004). Therefore, prevent the occurrence of hyperglycemia condition is an alternative strategy inpatient diabetes management.

The inhibition of the  $\alpha$ -glucosidase enzyme (EC 3.2.1.20) is commonly applied to cure diabetes through a mechanism by reducing polysaccharides hydrolysis (digestion) so that glucose absorption is low and consequently does not occur hyperglycemia (Sangeetha and Devi, 2018). Acarbose is a commercial drug of DM which able to inhibit  $\alpha$ -glucosidase. Still, it has several more side effects, such as the liver and abdominal illnesses, diarrhoea, and flatulence (Godbout and Chiasson, 2007). Thus, the find of novelty  $\alpha$ -glucosidase inhibitor with least side effect is of enormous significance for diabetes management. Recently, several reports have shown that the medicinal plant as a source of  $\alpha$ -glucosidase inhibitor (Nurcholis *et al.*, 2018; Magaji *et al.*, 2020; Trinh *et al.*, 2020). *Piper crocatum* Ruiz & Pav. is a medicinal plant that belongs to the family Piperaceae and traditionally used to treat diabetes mellitus in Indonesia (Safithri and Fahma, 2008). As the reported literature shows, no articles about the influence of different concentrations of *P. crocatum* ethanol extract leaves on  $\alpha$ -glucosidase inhibitory, and its phytochemical identification has been presented. This property was evaluated in this study. Thus, the objective of this work is to investigate the mechanism of  $\alpha$ -glucosidase inhibitory activity and phytochemical analysis from *P. crocatum* ethanol extract leaves.

## MATERIALS AND METHODS

### Reagents and chemicals

Acarbose and *p*-nitrophenyl- $\alpha$ -D-glucopyranoside were purchased from Sigma (St. Louis, MO, USA). All other chemicals were of analytical grade.

### Plant material and extraction

The *P. crocatum* was collected from Bogor, West Java, Indonesia, and identified by Dr Mega Safithri. The extraction used the maceration method at room temperature. Briefly, 25 g of *P. crocatum* fresh leaves were macerated using 70% ethanol (100 ml). After 2x24 h, the solution filtered and then evaporated at 50 °C and finally dried using freeze dryer at -50 °C and 8 mBar.

### $\alpha$ -Glucosidase inhibition assay

The  $\alpha$ -glucosidase inhibition of the sample extract and acarbose were measured according to the assay described by (Dubey *et al.*, 2017), with modifications. The  $\alpha$ -glucosidase (0.5 mg) dissolved in 0.1 M phosphate buffer (pH 7.0) containing bovine serum

albumin (100 mg). Before used, the enzyme solution was diluted 25 times, with 0.1 M phosphate buffer pH 7.0. The sample (20 ml) at various concentrations (0.1% to 1.0%) in DMSO was mixed with 980 ml buffer phosphate pH 7.0 (0.1 M) and 500 ml *p*-nitrophenyl- $\alpha$ -D-glucopyranoside (20 mM). After incubated for 5 min at 37 °C, the mixture was added enzyme solution (500 ml) and incubated again for 15 min at 37 °C. Finally, the reaction was terminated with 2 ml Na<sub>2</sub>CO<sub>3</sub> solution (200 mM), and absorbance at 400 nm was measured with UV-Vis spectrophotometer. The blank was used DMSO with no extract. The  $\alpha$ -glucosidase inhibition of the sample extract was calculated as follows:

$$\text{inhibition (\%)} = \frac{(A_{\text{control}} - A_{\text{sample}})}{A_{\text{control}}} \times 100$$

where  $A_{\text{control}}$  is an absorbance without extract;  $A_{\text{sample}}$  is an absorbance with the extract.

### The kinetic of $\alpha$ -glucosidase inhibition

The mechanism of kinetic inhibition of the sample, in the presence or absence, on  $\alpha$ -glucosidase was determined by using assay method in Section  $\alpha$ -glucosidase inhibition assay with serial concentration *p*-nitrophenyl- $\alpha$ -D-glucopyranoside (5 – 25 mM) for 15 min at 37 °C. Reactions were stopped, and absorption was measured and plotted by the Libewaver-Burk curve.

### GC-MS analysis

Phytochemical analysis of *P. crocatum* ethanol extract leaves was performed using the GC-MS instrument. GC-MS equipped with capillary column HP-5 (Agilent 19091J-433; 0.25 mm x 30 m x 0.25  $\mu$ m; 5% diphenyl, 95% dimethylpolysiloxane). The solution sample (1 ml) injected and used a flow rate of 1 ml/min—the temperature and pressure used of 300 °C and 10.47 psi, respectively. Helium gas used as the eluent. Mass parameter detection with masses 50 – 800 (MS quad temperature of 150-200 °C and MS source 250-300 °C) were used to detection of compounds. The identification of mass-spectrum GC-MS was evaluated using the database of NIST.

## RESULTS AND DISCUSSION

$\alpha$ -Glucosidase inhibitory activity of *P. crocatum* ethanol extract leaves (PCE) are illustrated in Figure 1. The concentration PCE of 0.1% to 1% have significantly lower inhibition on  $\alpha$ -glucosidase activity compared to 1% acarbose (80.97%) at  $p < 0.05$ . The percentage of inhibition value of PCE ranged from 1.29% to 40.80%. These results indicated that the percentage of  $\alpha$ -glucosidase inhibition increased

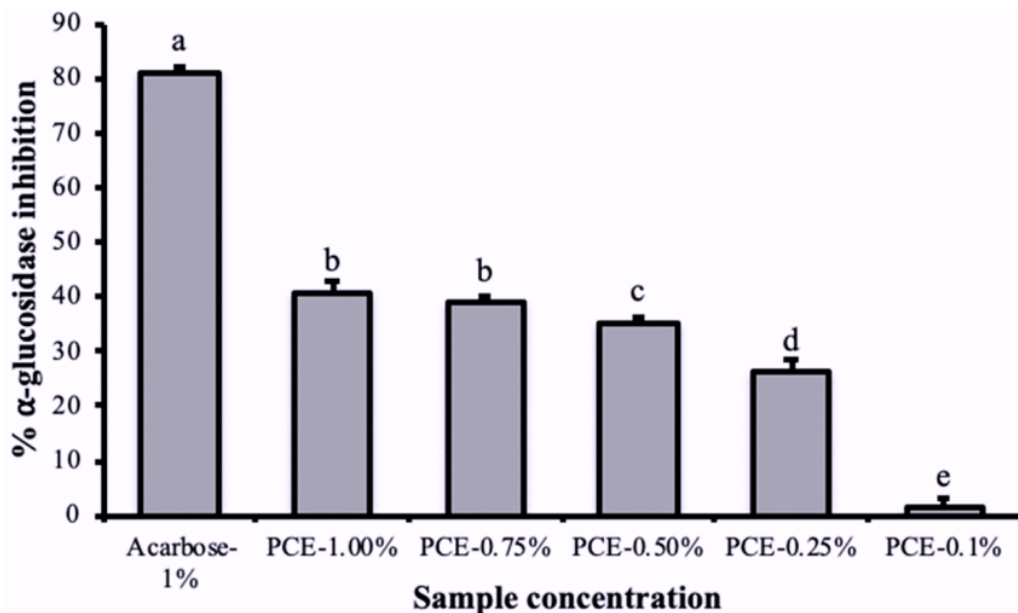


Figure 1: α-glucosidase inhibition activity of *Piper crocatum* ethanol extract (PCE) and acarbose at different concentrations. Different letter on the top of the bar chart showed a significant difference at  $p < 0.05$

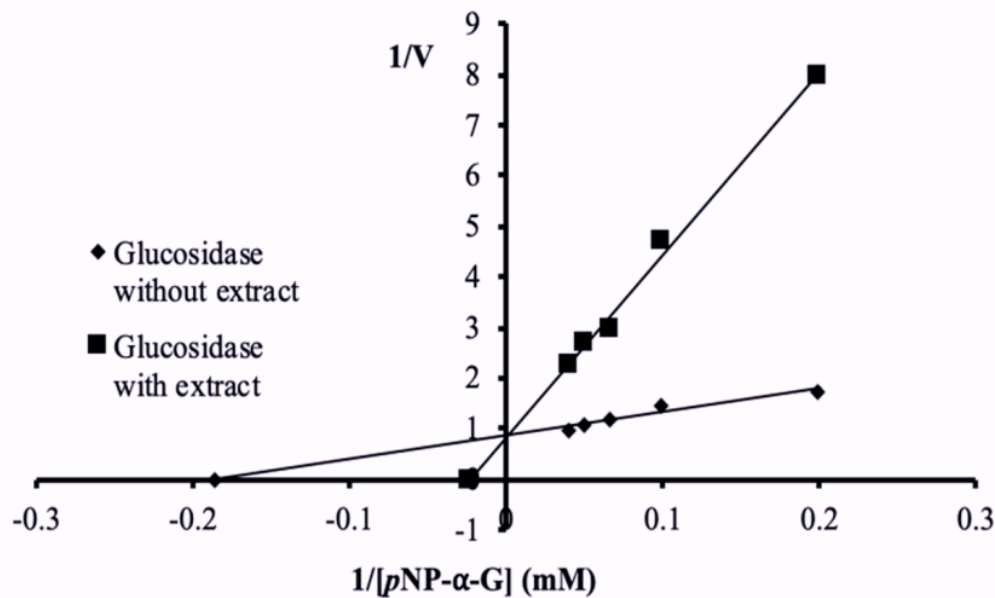
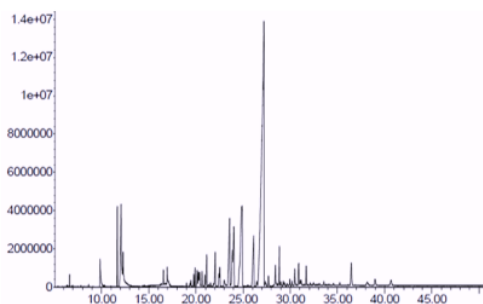


Figure 2: Lineweaver-Burk plots of α-glucosidase inhibition at different concentrations of p-nitrophenyl-α-D-glucopyranoside (PnP-α-G) by *Piper crocatum* ethanol extract

**Table 1: Metabolite identified in the *Piper crocatum* ethanol extract by GC-MS**

No	Retention Time (min)	Area (%)	Metabolite
1	12.07	6.13	Linolenic acid
2	24.89	12.19	Phenol
3	26.12	4.52	Phytosteroid
4	27.20	44.69	Stilbene
5	36.46	1.65	a-Tocopherol

in the rising concentration of PCE. These data were coherent with the results of previous work on the (2019).

**Figure 3: GC-MS chromatogram of *Piper crocatum* ethanol extract**

beverage formula of *P. crocatum* (Safithri and Kurniawati, 2016; Syaefudin *et al.*, 2016)

The enzyme kinetics of the  $\alpha$ -glucosidase in the presence of the PCE (inhibitor/extract) was determined from Lineweaver-Burk curve. The Lineweaver-Burk plot is a general technique for evaluation of the enzyme kinetics (Rouzbehan *et al.*, 2017). The inhibition kinetics of PCE on  $\alpha$ -glucosidase is shown in Figure 2. The line showed the same in Y-intercept between  $\alpha$ -glucosidase with extract (PCE) and without extract. This result indicated that the PCE exhibited a competitive type of  $\alpha$ -glucosidase inhibition. This mechanism action of competitive is similarly with acarbose on  $\alpha$ -glucosidase inhibition (Prasad *et al.*, 2019). Therefore, the higher concentration of PCE is required to decrease the hyperglycemia condition.

The chromatogram of GC-MS of the PCE presented in Figure 3. The metabolite was identified based on a comparison between NIST library with the mass spectra of the compounds; the five metabolites were identified and characterized (Table 1). The stilbene was the primary compound on PCE (44.69%) followed by phenol (12.19%), linolenic acid (6.13%), phytosteroid (4.52%), and  $\alpha$ -tocopherol (1.65%). Among the metabolites, stilbene and phenol were reported to have  $\alpha$ -glucosidase inhibitory activity (Zhang *et al.*, 2017; Figueiredo-González *et al.*,

## CONCLUSIONS

We concluded that *P. crocatum* ethanol extract leaves possess of  $\alpha$ -glucosidase inhibitory activity with competitive mode for kinetic enzyme mechanism. The metabolite of stilbene and phenol of *P. crocatum* ethanol extract leaves may be a role for its anti-diabetic properties.

## ACKNOWLEDGEMENT

The authors thank to Laboratory Tropical Biopharmaca Research Center, Bogor Agricultural University, Indonesia, for providing facilities.

## Conflict of Interest

The authors declare that they have no conflict of interest for this study.

## Funding Support

The authors declare that they have no funding support for this study.

## REFERENCES

- Brugnara, L., Novials, A., Ortega, R., Rivas, B. D. 2018. Clinical characteristics, complications and management of patients with type 2 diabetes with and without diabetic kidney disease (DKD): A comparison of data from a clinical database. *Endocrinología, Diabetes y Nutrición*, 65(1):30–38.
- Dubey, S., Ganeshpurkar, A., Ganeshpurkar, A., Bansal, D., Dubey, N. 2017. Glycolytic enzyme inhibitory and antiglycation potential of rutin. *Future Journal of Pharmaceutical Sciences*, 3(2):158–162.
- Elsayed, M. S., Badawy, A. E., Ahmed, A., Omar, R., Mohamed, A. 2019. Serum cystatin C as an indicator for early detection of diabetic nephropathy in type 2 diabetes mellitus. *Diabetes & Metabolic Syndrome: Clinical Research & Reviews*, 13(1):374–381.
- Figueiredo-González, M., Reboredo-Rodríguez, P., González-Barreiro, C., Carrasco-Pancorbo, A.,

- Cancho-Grande, B., Simal-Gándara, J. 2019. The involvement of phenolic-rich extracts from Galician autochthonous extra-virgin olive oils against the  $\alpha$ -glucosidase and  $\alpha$ -amylase inhibition. *Food Research International*, 116:447–454.
- Gargiulo, P., Giusti, C., Pietrobono, D., Torre, D. L., Diacono, D., Tamburrano, G. 2004. Diabetes mellitus and retinopathy. *Digestive and Liver Disease*, 36:S101–S105.
- Godbout, A., Chiasson, J.-L. 2007. Who should benefit from the use of alpha-glucosidase inhibitors? *Current Diabetes Reports*, 7(5):333–339.
- Khalighi, Z., Badfar, G., Mahmoudi, L., Soleymani, A., Azami, M., Shohani, M. 2019. The prevalence of depression and anxiety in Iranian patients with diabetes mellitus: A systematic review and meta-analysis. *Diabetes & Metabolic Syndrome: Clinical Research & Reviews*, 13(4):2785–2794.
- Khouja, T., Miller, R. G., Moore, P. A., Orchard, T. J., Costacou, T. 2019. Periodontal disease, smoking, cardiovascular complications and mortality in type 1 diabetes. *Journal of Diabetes and its Complications*, 33(9):603–609.
- Magaji, U. F., Sacan, O., Yanardag, R. 2020. Alpha amylase, alpha glucosidase and glycation inhibitory activity of Moringa oleifera extracts. *South African Journal of Botany*, 128:225–230.
- Nurcholis, W., Munshif, A. A., Ambarsari, L. 2018. Xanthorrhizol contents,  $\alpha$ -glucosidase inhibition, and cytotoxic activities in ethyl acetate fraction of Curcuma zanthorrhiza accessions from Indonesia. *Revista Brasileira de Farmacognosia*, 28(1):44–49.
- Prasad, B. J., Sharavanan, P. S., Sivaraj, R. 2019. The efficiency of Oryza punctata extract on glucose regulation: Inhibition of  $\alpha$ -amylase and  $\alpha$ -glucosidase activities. *Grain & Oil Science and Technology*, 2(2):44–48.
- Rouzbahan, S., Moein, S., Homaei, A., Moein, M. R. 2017. Kinetics of  $\alpha$ -glucosidase inhibition by different fractions of three species of Labiatae extracts: a new diabetes treatment model. *Pharmaceutical Biology*, 55(1):1483–1488.
- Saeedi, P., Petersohn, I., Salpea, P., Malanda, B., Karuranga, S., Unwin, N., Colagiuri, S., Guariguata, L., Motala, A. A., Ogurtsova, K., Shaw, J. E., Bright, D., Williams, R. 2019. Global and regional diabetes prevalence estimates for 2019 and projections for 2030 and 2045: Results from the International Diabetes Federation Diabetes Atlas, 9th edition. *Diabetes Research and Clinical Practice*, 157:107843–107843.
- Safithri, M., Fahma, F. 2008. The potency of Piper crocatum Decoction as an Antihyperglycemia in Rat Strain Sprague Dawley. *HAYATI Journal of Biosciences*, 15(1):45–48.
- Safithri, M., Kurniawati, A. 2016. The formula of Piper crocatum, Cinnamomum burmanii, and Zingiber officinale extract as a functional beverage for people with diabetes. *International Food Research Journal*, 23(3).
- Sangeetha, R., Devi, N. 2018. In-vitro amylase and glucosidase inhibitory activity of the extracts of the leaves of Madhuca longifolia. *International Journal of Research in Pharmaceutical Sciences*, 9(3):980–983.
- Sayin, N., Kara, N., Pekel, G. 2015. Ocular complications of diabetes mellitus. *World journal of diabetes*, 6(1):92.
- Syaefudin, S., Safithri, M., Hasanah, U. 2016. Stabilitas total fenolik, aktivitas antioksidan, dan aktivitas penghambatan  $\alpha$ -glukosidase pada minuman fungsional berbasis sirih merah (Piper crocatum Ruiz & Pav.). *Jurnal Gizi dan Pangan*, 11(2):83–90.
- Trinh, D. H., Tran, P. T., Trinh, B. T., Nguyen, H. T., Nguyen, H. D., Ha, L. D., Nguyen, L.-H. D. 2020. Coumarins and acridone alkaloids with  $\alpha$ -glucosidase inhibitory and antioxidant activity from the roots of Paramignya trimera. *Phytochemistry Letters*, 35:94–98.
- Wilkinson, M. J., Zadourian, A., Taub, P. R. 2019. Heart Failure and Diabetes Mellitus: Defining the Problem and Exploring the Interrelationship. *The American Journal of Cardiology*, 124(S3):S3–S11.
- Zhang, A. J., Rimando, A. M., Mizuno, C. S., Matthews, S. T. 2017.  $\alpha$ -Glucosidase inhibitory effect of resveratrol and piceatannol. *The Journal of Nutritional Biochemistry*, 47:86–93.
- Zhang, J., Xiao, J., Giampieri, F., Forbes-Hernandez, T. Y., Gasparrini, M., Afrin, S., Cianciosi, D., Reboredo-Rodriguez, P., Battino, M., Zheng, X. 2019. Inhibitory effects of anthocyanins on  $\alpha$ -glucosidase activity. *Journal of Berry Research*, 9(1):109–123.

# Kinetics of $\alpha$ -glucosidase inhibitory activity and phytochemical analysis of *Piper crocatum* Ruiz & Pav. leaves ethanol extract

---

## ORIGINALITY REPORT

---

15%

SIMILARITY INDEX

12%

INTERNET SOURCES

9%

PUBLICATIONS

5%

STUDENT PAPERS

---

## MATCH ALL SOURCES (ONLY SELECTED SOURCE PRINTED)

---

6%

★ [pdfs.semanticscholar.org](https://pdfs.semanticscholar.org)

Internet Source

---

Exclude quotes  On

Exclude matches  Off

Exclude bibliography  On