

# Dame Joyce Pohan (Effect of Putri Malu (Mimosa pudica Linn) Leaf Extract as an Inhibitor of Vibrio cholerae Growth)

*by* Library Referensi

---

**Submission date:** 30-Jan-2024 09:21AM (UTC+0700)

**Submission ID:** 2281042220

**File name:** Linn\_Leaf\_Extract\_as\_an\_Inhibitor\_of\_Vibrio\_cholerae\_Growth.pdf (302.38K)

**Word count:** 4814

**Character count:** 25957



# Effect of Putri Malu (*Mimosa pudica* Linn) Leaf Extract as an Inhibitor of *Vibrio cholerae* Growth

Dame Joyce Pohan <sup>a\*</sup> and John Jackson Yang <sup>b</sup>

<sup>a</sup> Department of Microbiology, Faculty of Medicine, Universitas Kristen Indonesia, Indonesia.

<sup>b</sup> Department of Biochemistry, Faculty of Medicine, Universitas Kristen Indonesia, Indonesia.

## Authors' contributions

This work was carried out in collaboration between both authors. Both authors read and approved the final manuscript.

## Article Information

DOI: 10.9734/JOCAMR/2024/v25i2514

## Open Peer Review History:

This journal follows the Advanced Open Peer Review policy. Identity of the Reviewers, Editor(s) and additional Reviewers, peer review comments, different versions of the manuscript, comments of the editors, etc are available here: <https://www.sdiarticle5.com/review-history/108944>

Original Research Article

Received: 13/11/2023

Accepted: 18/01/2024

Published: 29/01/2024

## ABSTRACT

Indonesia is famous for its diversity of plant sources that are beneficial for health, including the Putri Malu plant (*Mimosa pudica* Linn). Putri Malu leaves contain compounds such as alkaloids, flavonoids, saponins, and tannins, which are antibacterial. This research aims to determine the effect of Putri Malu leaves ethanol extract as an inhibitor against *Vibrio cholerae*. This research is experimental in vivo using the Kirby-Bauer disk diffusion method. The Putri Malu leaf extract concentrations used were 100 mg/ml, 50 mg/ml, 25 mg/ml, 12.5 mg/ml, 6.25 mg/ml, 3.125 mg/ml, and 1.5625 mg/ml. The antibiotic tetracycline 30 mcg was used as a positive control, and distilled water was used as a negative control. The average diameter of the *Vibrio cholerae* inhibition zone was 21.00 mm and 0 mm for the positive control and negative control, respectively. The average diameter of the bacterial inhibition zone for Putri Malu leaf extract was 2.36 mm, 1.26 mm, 0.96 mm, 1.30 mm, 0.80 mm, 0.60 mm, and 0.36 mm, respectively. Based on the data, it can be concluded that Putri Malu leaf extract is less effective in inhibiting *Vibrio cholerae* growth.

4

\*Corresponding author: E-mail: [dame.pohan@uki.ac.id](mailto:dame.pohan@uki.ac.id);

**Keywords:** Putri malu leaves; *Vibrio cholerae*; antibacterial activity.

## 1. INTRODUCTION

Since the time of our ancestors, Indonesia has been known for its many spices. Natural ingredients, especially in Indonesia, have been widely used in the health sector for preventive, curative, and rehabilitative purposes against disease. Alternative medicine using plants in Indonesia is currently being used more frequently from year to year, along with the development of technology. The use of plants and other natural ingredients for treatment must be studied further, especially Indonesia's vegetable resources, known for their biodiversity since immemorial [1].

Researchers have carried out many studies to test the contents of various plants or other natural ingredients to determine the efficacy of these natural ingredients. One of them is the Putri Malu plant (*Mimosa pudica* Linn). The phytochemical content in Putri Malu from *in vitro* and *in vivo* experiments has been proven to have antibacterial activity, which is beneficial for human body [2,3]. Research has been tested on the extract of putri malu leaves as an antibacterial in inhibiting the growth of *Escherichia coli*, *Staphylococcus aureus*, *Enterobacter cloacae*, *Pseudomonas aeruginosa*, and *Proteus stuarti* in research conducted by Lieken Mehingko et al. in 2010 [4]. The putri malu plant contains alkaloids, flavonoids, saponins, and tannins, inhibiting bacterial growth [5,6].

The Putri Malu plant has considerable properties for curing various types of diseases. From the leaves to the roots, this plant has medicinal properties as a tranquilizer, expectorant, diuretic, antitussive, antipyretic, anti-inflammatory, and constipation [7,8].

Putri Malu leaf extract gel has strong antimicrobial power. Based on research conducted by Abirami et al., Putri Malu extract gel was made in 4 concentrations, namely 30, 60, 90, and 120 ml; the test results showed inhibitory power against fungal and bacterial microbes [9]. The ethanol extract of Putri Malu leaves contains alkaloids, flavonoids, saponins, tannins, triterpenoids, and glycosides [5,6].

Alkaloids are a group of basic organic substances found in many plants and have pharmacological effects, such as atropine, caffeine, morphine, and nicotine [10]. Alkaloid extract gels obtained from medicinal plants have

diverse effects on the host's biological activities, including antimalarial, antimicrobial, antihyperglycemic, anti-inflammatory, and pharmacological effects [11]. Flavonoids are compounds with a specific aromatic core and are widely found in higher plants, often in pigments [8]. Flavonoids have an antimicrobial effect as a plant barrier and a defense response against infections caused by microbes. So, flavonoids are known to have effective antimicrobial effects and can deal with a wide range of microbes [11,9]. Saponin, a group of glycosides found in plants and will form foam when dissolved in water. Saponin, a detergent-like substance that has antibacterial effects as well as anticancer effects. Saponin has detergent-like properties and can increase the permeability of bacterial cell membranes without damaging them [12,13]. Tannin constitute active secondary metabolite compound with antibacterial properties. Tannin is a complex organic substance consisting of phenolic compounds that are difficult to separate and crystallize, precipitate proteins from the solution, and combine with these proteins [14,15,16]. Triterpene belongs to the terpenoid class, which chemically has the characteristics of 6 isoprene units with a total of 30 C (carbon) atoms. The hydroxyl group in the A ring of pentacyclic triene is an important part of antibacterial activity. Pentacyclic triene contains three A-ring hydroxyl groups commonly found in plants and exhibits significant antibacterial activity [17]. Glycosides are compounds in plants that contain carbohydrates and can be converted through hydrolytic breakdown into sugar and non-sugar components (aglycone) and are named according to the sugar they contain, such as glucoside (glucose), pentoside (pentose), fructoside (fructose) [11]. *Vibrio cholerae*, one of the bacteria most often found in surface water worldwide. *Vibrio* is an aerobic bacteria that curved, rod-shaped, motile, and has a flagellum. One example of this type of bacteria is *Vibrio cholerae* serogroups O1 and O139, which cause cholera in humans. These bacteria produce enterotoxins that cause cholera, which is large volumes of watery diarrhea that can cause dehydration and death quickly [18].

Under normal circumstances, *Vibrio cholerae* is pathogenic in humans. Human with normal gastric acidity levels requires an infectious dose of 10 [19] or more bacterial cells in the fluid to cause infection because these bacteria are very sensitive to the acidic atmosphere of the

stomach. If bacteria enter with food, the infectious dose becomes  $10^2$ - $10^4$  cells because food can neutralize stomach acidity. The treatment process or other conditions that can reduce stomach acidity make a person more sensitive to *Vibrio cholerae* infection [20].

*Vibrio cholerae* produces an enterotoxin with a molecular weight of around 84,000, which consists of subunit A and subunit B. Ganglioside GM1 is a receptor for subunit B, which helps the entry of subunit A into cells. Activated A1 subunit causes an increase in cAMP levels in cells, resulting in prolonged hypersecretion of water and electrolytes. It hampers sodium and chloride absorption by the intestine's microvilli, resulting in diarrhea rich in 20-30 L/day electrolytes, which, if left untreated, will cause dehydration, shock, acidosis, and death [20].

## 2. METHODS

This antibacterial effectiveness test study was a descriptive, experimental study using a negative control of sterile distilled water solution and a positive control of 30 mcg tetracycline antibiotic disks as a control for the growth of *Vibrio cholerae*. The serial paper disk diffusion method was used, or the Kirby-Bauer Method. Leaves of Putri Malu (*Mimosa pudica* Linn), which grow wild in the Pangandaran area. This research carried out nine treatments, namely: Negative control, administration of ethanol extract of Putri Malu leaves with concentrations of 1.5625 mg/ml, 3.125 mg/ml, 6.25 mg/ml, 12.5 mg/ml, 25 mg/ml, 50 mg/ml, 100 mg/ml, and positive control. This treatment was repeated three times. The data was obtained by observing and measuring the inhibition zone on the MHA media using a vernier caliper.

The sample material consists of 1200 grams of Putri Malu plant leaves, which have been cleaned and then dried in the oven for one day at 40°C. After that, grind it with a grinding machine until it becomes powder. The fine powder weighed and soaked in 96% ethanol solvent with a ratio of 1:5 while stirring for 2-3 hours, then left for 24 hours, separated and filtered with filter paper, and evaporate the filtrate with a rotary evaporator at temperature 50°C for 3 hours to get Crude extract. To get a 100 mg/ml concentration, 0.1 gram of thick extract was mixed with 1 ml sterile distilled water until homogen. Followed with serial dilution to get 50 mg/ml, 25 mg/ml, 12.5 mg/ml, 6.25 mg/ml, 3.125 mg/ml, and 1.5625 mg/ml.

Making TCBS Agar Media - 8.8 g TCBS agar medium were poured into sterilized Erlenmeyer flask contained 100ml distilled water, followed by boiled to dissolve the medium completely. The mixture media were poured 15-20 ml into a sterilized Petri dish. This media was used to carried out to multiply, rejuvenate, and identify on selective media the *Vibrio cholerae* by taking one cycle of pure culture of the *Vibrio cholerae* into TCBS agar media and then incubating at 37°C for 24 hours in an incubator.

Gram staining was carried out to determine the morphology and type of gram-positive or negative bacteria. The working procedure are: a) Making preparations - Heat the tube over a Bunsen flame and take colonies from TCBS agar media. Physiological NaCl drops on a slide. followed by smear the colony using the loop on the glass preparation and then fix it by passing the preparation over a Bunsen flame 2-3 times; b) Preparing of 0.5% Mac Farland solution - 0.05 ml of 1% BaCl<sub>2</sub> solution is mixed with 9.95 ml of 1% H<sub>2</sub>SO<sub>4</sub> solution in a test tube until homogeneous. This solution is used as a standard solution to compare the turbidity of bacterial suspensions. This turbidity is equivalent to or the same as a bacterial suspension of  $1.5 \times 10^8$  CFU/ml; c) Preparing of bacterial suspension - The culture of *Vibrio cholerae* on TCBS agar media is taken from the tip of the eye of the tube and suspended in Nutrient Broth, then the turbidity to the 0.5% Mac Farland standard; d) Making MHA media (Mueller Hinton Agar) - 19 grams of MHA powder was put into an Erlenmeyer tube containing 500 ml of distilled water and heated until boiling to dissolve the media. Then, it was sterilized by autoclaving at 121°C for 15 minutes. Then, pour it into a large, sterile petri dish; and e) testing stage is carried out through the following steps: a) Take a bacterial suspension of 0.5 McFarland *Vibrio cholerae* using a sterile cotton swab; b) Then scratch the surface of the MHA media until the bacterial suspension is evenly distributed over the entire surface of the media, then cover the media again; c) MHA media which has been inoculated with *Vibrio cholerae* suspension; d) let stand for a while so that the bacterial suspension seeps into the agar. Each disc has been saturated with varying concentrations of ethanol extract of Putri Malu leaves, concentrations of 1.5625 mg/ml, 3.125 mg/ml, 6.25 mg/ml, 12.5 mg/ml, 25 mg/ml, 50 mg/ml, 100 mg/ml and control, attached to the surface of the agar in the same plate and slightly pressed with tweezers until the disc adheres perfectly to the surface of the

media; e) The distance between one disc and another is placed at a distance of  $\pm 15$  mm and discs that have been attached to the surface of the media must not be moved or shifted; and f) MHA media inoculated with *Vibrio cholerae* bacteria was incubated in an incubator at 37°C for 18-24 hours.

### 3. RESULTS AND DISCUSSION

Data were obtained descriptively by recording the results of the *Vibrio cholerae* bacteria inhibition test experiment after treatment with

Putri Malu (*Mimosa pudica* Linn) leaf extract at various concentrations (1.5625 mg/ml, 3.125 mg/ml, 6.2 mg/ml, 12.5 mg/ml, 25 mg/ml, 50 mg/ml, 100 mg/ml), negative control (sterile distilled water), and positive control (Tetracycline antibiotic). The data was then analyzed in a tabulated form containing details of the size of the inhibition zones formed in several different concentrations of Putri Malu (*Mimosa pudica* Linn) leaf extract and then analyzed and reviewed descriptively. The extraction of 1200 grams of Putri Malu leaves with 96% ethanol solvent resulted in an extract of 31.8 grams.



Fig. 1. Results of Ethanol Extract of Putri Malu (*Mimosa pudica* Linn) Leaves

Identification of Bacteria on Gram Staining and TCBS Agar Media

- a. Gram Staining - The morphology of gram-negative rod-shaped bacteria obtained in gram staining. It can be seen in Fig. 2.

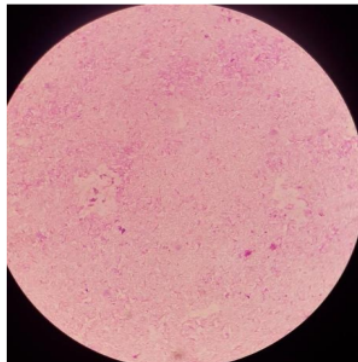
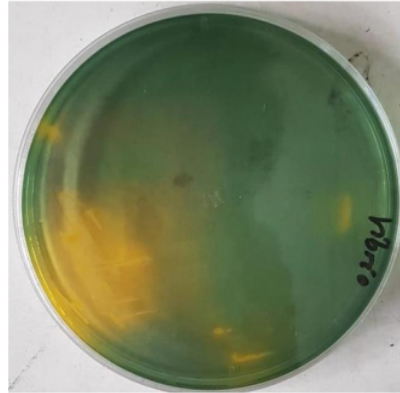


Fig. 2. Gram staining of *Vibrio cholerae* (1000x magnification) on TCBS

- b. Agar Media - From seeds on TCBS agar media, colonies were round, convex, smooth, and yellow in color showed in Fig. 3.



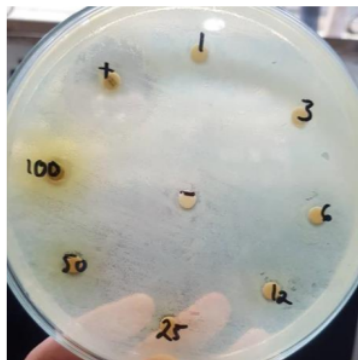


**Fig. 3. *Vibrio cholerae* colonies on TCBS agar media**

c. Antibacterial Activity of Putri Malu Leaf Extract on the Growth of *Vibrio Cholerae* The antibacterial activity of Putri Malu extract by measuring the diameter of the inhibition zone on Mueller Hinton Agar (MHA) media can be seen in Table 1, and the image of the inhibition zone showed in Fig. 4.

**Table 1. Average size of inhibitory zone diameter of putri malu leaf ethanol extract in various concentrations**

Concentration	Average Diameter of the Inhibition Zone Formed (mm)
1,5625	0,36
3,125	0,60
6,25	0,80
12,5	1,30
25	0,96
50	1,26
100	2,36
C (+)	21,00
C (-)	0



**Fig. 4. Effectiveness Test of Putri Malu Leaf Ethanol Extract in Various Concentrations (100 mg/ml, 50 mg/ml, 25 mg/ml, 12.5 mg/ml, 6.25 mg/ml, 3.125 mg/ml, 1, 5625 mg/ml) Against *Vibrio cholerae* Inaba**

#### 4. DISCUSSION

Based on the research results on gram staining and seeding on selective TCBS agar media, the bacteria used in the inhibitory power test of Putri Malu leaf extract were *Vibrio cholerae*. It follows the theory, which states that the morphology of the *Vibrio cholerae* is a gram-negative rod with a characteristic comma shape. However, in long-standing cultures, this bacterium can form a straight rod resembling other gram-negative enteric bacteria. *Vibrio cholerae* grows well on TCBS agar media by forming round, convex, smooth, and yellow colonies (sucrose fermentation) [20].

In this study showed that the largest average diameter of the inhibition zone of Putri Malu leaf extract occurred at a concentration of 100 mg/ml, 2.36 mm, and the smallest was at a concentration of 1.5625 mg/ml, 0.36 mm. The inhibition zone formed on the agar medium indicates that the Putri Malu leaf extract has bacteriostatic active compounds.

Flavonoids can damage cell walls and inhibit protein formation, so they can inhibit microbial growth, which results in cell death. The other compounds, such as tannins, can also damage cell membranes. Besides being antibacterial, tannin compounds also have antifungal properties because they can damage the formation of conidia in fungi. The content of compounds such as alkaloids in putri malu leaves can also denature proteins so that they can interfere with enzyme activity and cause cell death. Saponin compounds include polyphenolic compounds, which can have antibacterial properties by damaging the cytoplasmic membrane of bacteria. As a result of damage to the cytoplasmic membrane, the necessary food ingredients or nutrients were not distributed properly, so bacterial growth disrupted and can even result in death [21].

It was found that Putri Malu leaf extract with concentrations of 100 mg/ml, 50 mg/ml, 25 mg/ml, 12.5 mg/ml, 6.25 mg/ml, 3.125 mg/ml, 1.5625 mg/ml has low inhibitory power because the diameter of the inhibition zone formed was less than 10 mm. Factors influencing the formation of inhibition zones include the amount of antibacterial substances in a plant. The antibacterial substances in question include, for example, alkaloids, flavonoids, saponins, and

tannins. Many factors influence the amount of substances contained in a plant. According to research by Nurliani Bermawie et al. soil type or regional factors also influence the substance content in a plant [22]. For example, research conducted by Ranjeet Kumar Ranjan et al. conducted phytochemical tests on the leaves and roots of the Putri Malu plant taken in the Kalingavaram area, India. In this research, no alkaloids, flavonoids, and saponins were found. Meanwhile, in another study conducted by Sandhya Madan Mohan et al., they carried out phytochemical tests on the leaves and roots of the Putri Malu plant obtained from the Chhattisgarh area, India. Putri Malu leaves contained flavonoids, alkaloids, saponins, and tannins in the phytochemical test [6,23].

In general, the increase in the diameter of the inhibition zone was directly proportional to the increase in concentration. In this study, it was found that at concentrations of 50 mg/ml and 25 mg/ml, the average diameter of the inhibition zone formed was smaller than at a concentration of 12.5 mg/ml. This phenomenon was experienced by Anggita et al. (2018) in research on the antibacterial activity test of ethanol extract of Putri Malu (*Mimosa pudica*) leaves against *Pseudomonas aeruginosa*. According to Ariyanti et al., this phenomenon can occur due to differences in the diffusion of antibacterial compounds in the agar medium, and different types and concentrations of antibacterial compounds also produce different inhibitory zone diameters [21,24].

The positive control in this study used 30 mcg of tetracycline antibiotic discs and produced the largest average diameter of the inhibition zone, 21.00 mm. According to CLSI (Clinical Laboratory Standards Institute), the level of tetracycline antibiotic resistance is categorized as sensitive if the bacterial inhibition zone diameter is  $\geq 19$  mm, intermediate category if the bacterial inhibition zone diameter is 15-18 mm, and resistant category if the bacterial inhibition zone diameter is  $\leq 14$  mm. Based on this explanation, the antibacterial effect of the tetracycline antibiotic in this study was included in the sensitive category, with the average diameter of the inhibition zone formed being more than 19 mm, namely 21.00 mm. [25] Several previous studies tested Putri Malu leaf extract against several gram-positive and gram-negative bacteria [4,21,26].

**Table 2. Previous research regarding the antibacterial activity test of putri malu leaf extract**

Year	Research Title	Treatment	Results-Conclusions
2010	Testing the Antimicrobial Effect of Putri Malu ( <i>Mimosa pudica</i> ) DUCHAAS & WALP) Leaf Extract <i>In Vitro</i> - Lieken Mehingko et al.	<i>In vitro</i> test by administering Putri Malu leaf extract (33%, 50%, and 100%) against <i>Pseudomonas aeruginosa</i> , <i>Enterobacter cloacae</i> , <i>Staphylococcus aureus</i> , <i>Proteus stuarti</i> , and <i>Escherichia coli</i> using the Kirby-Bauer method or diffusion test.	The results of the research can be concluded that Putri Malu leaf extract has antimicrobial power against the five types of bacteria tested, namely <i>Pseudomonas aeruginosa</i> , <i>Enterobacter cloacae</i> , <i>Staphylococcus aureus</i> , <i>Proteus stuarti</i> , and <i>Escherichia coli</i> .
2015	Inhibition Zone Test of Putri Malu ( <i>Mimosa pudica</i> ) Leaf Extract Against <i>Staphylococcus aureus</i> and Methicillin-resistant <i>Staphylococcus aureus</i> (MRSA) Bacteria <i>In Vitro</i> – Nyoman Ririn andrika Sari et al	<i>In vitro</i> test by administering putri malu leaf extract (25%, 50%, 75%, 100%) against <i>Staphylococcus aureus</i> and MRSA using the Kirby-Bauer method	Putri Malu leaf extract is sensitive in inhibiting the growth of <i>Staphylococcus aureus</i> and MRSA bacteria, with the recommended concentration being 25 mcg/ml for <i>Staphylococcus aureus</i> and 100 mcg/ml for MRSA
2018	Antibacterial Activity Test of Ethanol Extract of Putri Malu ( <i>Mimosa pudica</i> ) Leaves Against <i>Pseudomonas aeruginosa</i> Bacteria – Aulia Anggita et al	<i>In vitro</i> test by administering ethanol extract of putri malu leaves (1%, 2.5%, 5%, 10%) against <i>Pseudomonas aeruginosa</i> using the Kirby-Bauer method	Putri Malu leaf extract can inhibit the growth of <i>Pseudomonas aeruginosa</i> bacteria and has a weak inhibitory power.

Based on several previous studies, results showed that Putri Malu leaf extract was effective in inhibiting several gram-positive and negative bacteria. However, a study of Putri Malu leaf extract on *Vibrio cholerae* found that the diameter of the inhibition zone formed was less than 10 mm. It can happen because *Vibrio cholerae* produces Cholerae Toxin (CT) and Toxin Coregulated Pilus (TCP), which can protect bacteria from antibacterial compounds [27].

Another factor that could be the composition of the *Vibrio cholerae* cell wall consists of three main components, outer membrane lipoproteins, which contain protein molecules called porins and lipopolysaccharides. According to Iskandar et al. the porins in the outer membrane of gram-negative bacterial cell walls are hydrophilic, making it more difficult for the component molecules in an extract to enter the bacterial cells. The composition of bacterial cell walls also influences the diffusion of extract compounds into bacterial cells because the cell walls of

gram-negative bacteria are more multi-layered than the simpler cell walls of gram-positive bacteria [28].

## 5. CONCLUSION

Based on the results in this study, the ethanol extract of Putri Malu (*Mimosa pudica* Linn) leaves in various concentrations (100 mg/ml, 50 mg/ml, 25 mg/ml, 12.5 mg/ml, 6.25 mg/ml, 3.125 mg/ml, 1.5625 mg/ml) was less effective in inhibiting the growth of *Vibrio cholerae* Inaba bacteria. Thus, develop research regarding the inhibitory test of the ethanol extract of Putri Malu (*Mimosa pudica* Linn) leaves on the growth of *Vibrio cholerae*, it is recommended to carry out a phytochemical test to determine the type and concentration of antibacterial compounds in the ethanol extract of Putri Malu leaves and using different resistance test methods; b) To develop research regarding the inhibition test of Putri Malu (*Mimosa pudica* Linn) leaf extract, different extraction methods, and solvents can be used; and c) To develop research into the inhibitory



power of Putri Malu (*Mimosa pudica* Linn) leaf extract, it can be carried out on other pathogenic microorganisms.

#### CONSENT AND ETHICAL APPROVAL

It is not applicable.

#### COMPETING INTERESTS

Authors have declared that no competing interests exist.

#### REFERENCES

1. Hernawati D, Putra RR, Meylani V. Indigenous vegetables consumed as lalapan by Sundanese Ethnic group in West Java, Indonesia: potential, traditions, local knowledge, and it's future. South African Journal of Botany. 2022 Dec 1;151:133-45.
2. Widiyawati A, Susilo H, Suyamto S, Abdilah NA. Weed Community Structure in Patia Village Rice Fields Patia Sub-District, Pandeglang Regency. Biology, Medicine, & Natural Product Chemistry. 2023 Aug 10;12(1):423-30.
3. Tariq S, Wani S, Rasool W, Shafi K, Bhat MA, Prabhakar A, Shalla AH, Rather MA. A comprehensive review of the antibacterial, antifungal and antiviral potential of essential oils and their chemical constituents against drug-resistant microbial pathogens. Microbial pathogenesis. 2019 Sep 1;134:103580.
4. Maramis RN, Banne Y, Rindengan ER, Rintjap DS, Noviandini NM. Aktivitas Antibakteri Daun Putri Malu (*Mimosa pudica*) Terhadap Bakteri *Staphylococcus aureus* (Review Artikel). InPROSIDING Seminar Nasional 2023. Jun 9 (pp. 95-104).
5. Ahuchaogu A, Chukwu J, Obike A, Ugonna Oha T, Bull J, Echeme O. Quantitative determination of secondary metabolites and antibacterial activity of *Mimosa pudica*. Int. J. Med. Plants Nat. Prod. 2017;3:2454-7999.
6. Bili DT. Review Review: Efek Farmakologi Tanaman Putri Malu (*Mimosa pudica* Linn). Jurnal Beta Kimia. 2022;2(2):74-9.
7. Supiandi MI, Julung H, Ege B, Mahanal S, Zubaidah S. Potential of plant roots as traditional medicines of the Dayak Desa Tribe in Pakak, West Kalimantan, Indonesia. Medicinal Plants-International Journal of Phytomedicines and Related Industries. 2020;12(2):275-82.
8. Lu W, Shi Y, Wang R, Su D, Tang M, Liu Y, Li Z. Antioxidant activity and healthy benefits of natural pigments in fruits: A review. International journal of molecular sciences. 2021 May 6;22(9):4945.
9. Donadio G, Mensitieri F, Santoro V, Parisi V, Bellone ML, De Tommasi N, Izzo V, Dal Piaz F. Interactions with microbial proteins driving the antibacterial activity of flavonoids. Pharmaceutics. 2021 May 5;13(5):660.
10. Kumar S. Alkaloidal drugs-A review. Asian Journal of Pharmaceutical Science & Technology. 2014;4(3):107-19.
11. Ayalew H, Tewelde E, Abebe B, Alebachew Y, Tadesse S. Endemic medicinal plants of Ethiopia: Ethnomedicinal uses, biological activities and chemical constituents. Journal of Ethnopharmacology. 2022 Jul 15;293:115307.
12. Góral I, Wojciechowski K. Surface activity and foaming properties of saponin-rich plants extracts. Advances in colloid and interface science. 2020 May 1;279:102145.
13. Aisiah S, Prajitno A, Yuniarti A. The potential of bangkal leaf (*Nauclea subdita* [Korth.] Steud.) extract as antibacterial in catfish *Pangasius hypophthalmus* culture. Aquaculture, Aquarium, Conservation & Legislation. 2019 Dec 1;12(6):2093-102.
14. Setyorini D, Antarlina SS. Secondary metabolites in sorghum and its characteristics. Food Science and Technology. 2022 Jul 18;42.
15. Darbandi A, Asadi A, Mahdizade Ari M, Ohadi E, Talebi M, Halaj Zadeh M, Darb Emamie A, Ghanavati R, Kakanj M. Bacteriocins: Properties and potential use as antimicrobials. Journal of Clinical Laboratory Analysis. 2022 Jan;36(1):e24093.
16. Pratiwi AE. Isolasi, Seleksi dan Uji Aktivitas Antibakteri Mikroba Endofit Dari Daun Tanaman *Garcinia benthami* Pierre Terhadap *Staphylococcus aureus*, *Bacillus subtilis*, *Escherichia coli*, *Shigella dysenteriae*, dan *Salmonella typhimurium*. UIN Syarif Hidayatullah. Program Studi Farmasi. Jakarta: Fakultas Kedokteran dan Ilmu Kesehatan. 2015 Jun.
17. Sharma A, Sharma S, Kumar A, Kumar V, Sharma AK. Plant secondary metabolites: An introduction of their

- chemistry and biological significance with physicochemical aspect. In *Plant Secondary Metabolites: Physico-Chemical Properties and Therapeutic Applications*. Singapore: Springer Nature Singapore. 2022 Mar 2;1-45.
18. Prasad MM. Microbial hazards in fish and fishery products and its importance in fish trade. ICAR-Central Institute of Fisheries Technology; 2018.
  19. Dever JB, Sheikh MY. Spontaneous bacterial peritonitis—bacteriology, diagnosis, treatment, risk factors and prevention. *Alimentary pharmacology & therapeutics*. 2015 Jun;41(11):1116-31.
  20. Knirel YA, Sun Q, Senchenkova SN, Perepelov AV, Shashkov AS, Xu J. O-antigen modifications providing antigenic diversity of *Shigella flexneri* and underlying genetic mechanisms. *Biochemistry (Moscow)*. 2015 Jul;80:901-14.
  21. Balqist SN, Saputri FA. Aktivitas Antibakteri Beberapa Ekstrak Tanaman Terhadap *Staphylococcus aureus*. *Farmaka*. 2019 Aug 1;17(2):124-30.
  22. Ramadhan NS, Rasyid R, Syamsir E. Daya hambat ekstrak daun pegagan (*Centella asiatica*) yang diambil di Batusangkar terhadap pertumbuhan kuman *Vibrio cholerae* secara *in vitro*. *Jurnal Kesehatan Andalas*. 2015 Jan 1;4(1).
  23. Mohan SM, Pandey B, Rao SG. Phytochemical analysis and uses of *Mimosa pudica* Linn. *Chhattisgarh. IOSR J Environ Sci Toxicol Food Technol*. 2015; 1(3):1-4.
  24. Anggita A, Fakhurrizi F, Harris A. Uji aktivitas antibakteri ekstrak etanol daun putri malu (*Mimosa pudica*) terhadap bakteri *Pseudomonas aeruginosa*. *Jurnal Ilmiah Mahasiswa Veteriner*. 2018 Jul 31; 2(3):411-8.
  25. Yunus M, Sos S, Nabbi MK, Abbas M. Uji daya hambat madu hutan murni (*mei depuratum*) terhadap pertumbuhan bakteri *Staphylococcus aureus*. *Majalah Farmasi Nasional*. 2019 Feb 28;16(1):6-12.
  26. Sari NR, Wardana PW, Indrayani AW. Uji zona hambat ekstrak daun putri malu (*Mimosa pudica*) terhadap bakteri *Staphylococcus aureus* dan *Methicillin-resistant Staphylococcus aureus* (MRSA) secara *in vitro*. *Jurnal Medika Udayana*. 2015;4(4):1-9.
  27. Unterweger D, Miyata ST, Bachmann V, Brooks TM, Mullins T, Kostiuik B, Provenzano D, Pukatzki S. The *Vibrio cholerae* type VI secretion system employs diverse effector modules for intraspecific competition. *Nature communications*. 2014 Apr 1;5(1):3549.
  28. Sartika R, Purwiyanto AI. Aktivitas antibakteri ekstrak rumput laut *Euclima cottoni* terhadap bakteri *Escherichia coli*, *Staphylococcus aureus*, *Vibrio cholera* dan *Salmonella typhosa*. *Maspari Journal: Marine Science Research*. 2013 Jul 10; 5(2):98-103.

© 2024 Pohan and Yang; This is an Open Access article distributed under the terms of the Creative Commons Attribution License (<http://creativecommons.org/licenses/by/4.0>), which permits unrestricted use, distribution, and reproduction in any medium, provided the original work is properly cited.

*Peer-review history:*

The peer review history for this paper can be accessed here:  
<https://www.sdiarticle5.com/review-history/108944>

# Dame Joyce Pohan (Effect of Putri Malu (Mimosa pudica Linn) Leaf Extract as an Inhibitor of Vibrio cholerae Growth)

## ORIGINALITY REPORT

12%

SIMILARITY INDEX

10%

INTERNET SOURCES

10%

PUBLICATIONS

6%

STUDENT PAPERS

## PRIMARY SOURCES

1	<a href="https://id.scribd.com">id.scribd.com</a> Internet Source	2%
2	Submitted to Cornell University Student Paper	1%
3	<a href="https://nanopdf.com">nanopdf.com</a> Internet Source	1%
4	<a href="https://repository.uki.ac.id">repository.uki.ac.id</a> Internet Source	1%
5	<a href="http://www.ijstm.inarah.co.id">www.ijstm.inarah.co.id</a> Internet Source	1%
6	A F Dewinta, Y A Wahyudi, R Y Pratama, I E Susetya, R F Siregar, V R Manurung. "Inhibition effectivity of Halimeda macroloba seaweed extract against fish indigenous bacteria for safety fisheries product", IOP Conference Series: Earth and Environmental Science, 2021 Publication	1%

7	M Assegaf, Insafitri. "Potential extract of brown algae Sargassum sp. and Padina sp. as antibacterial Vibrio harveyi", IOP Conference Series: Earth and Environmental Science, 2023 Publication	1 %
8	Noor Zarina Abd Wahab, Nur Saidatul Aqilah Ja'afar, Samhani Binti Ismail. "Evaluation of Antibacterial Activity of Essential Oils of Melaleuca cajuputi Powell", Journal of Pure and Applied Microbiology, 2022 Publication	1 %
9	Submitted to Aberystwyth University Student Paper	1 %
10	journal-uim-makassar.ac.id Internet Source	1 %
11	www.ijert.org Internet Source	1 %
12	Submitted to Far Eastern University Student Paper	1 %
13	Submitted to Universitas Airlangga Student Paper	1 %
14	ejurnal.poltekkes-manado.ac.id Internet Source	1 %



Exclude quotes  On

Exclude bibliography  On

Exclude matches  < 1%