



Himalayan Journal of Community Medicine Public Health

(An Open Access Peer Reviewed Multilingual International Journal)

ISSN Print : 2709-3522
ISSN Online : 2709-3530

HIMALAYAN
JOURNALS

huj@himal.com | journals@huj.org

HIMALAYAN JOURNALS [Join Us | Contact Us](#)

Home Journals For Authors For Editors For Reviewers Membership Payments About

Publication Policies & Ethics

- Author Role
- Editor Role
- Reviewer Role
- Publisher Role

➤ **Head of Index**

➤ [Journal Home](#)



**Himalayan Journal of Community
Medicine and Public Health**

ISSN Print : 2709-3522 | ISSN Online : 2709-3530
Frequency : Bimonthly
Language : English
Origin : India

[Online Submission](#)

Impact Factor	No data
First Publication	N/A
Publication Count	118
Citation Count	N/A
Downloads/Articles	14602
Citations/Articles	N/A

[Home](#)[Journals](#)[For Authors](#) ▾[For Editors](#) ▾[For Reviewers](#) ▾[Membership](#) ▾[Payments](#)[About](#)

Publication Policies & Ethics

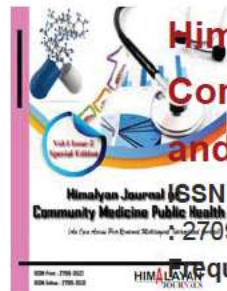
- [Author Role](#)
- [Editor Role](#)
- [Reviewer Role](#)
- [Publisher Role](#)

Useful Links

- [Journal Home](#)
- [Aim & Scope](#)
- [Article Archives](#)
- [Article Processing Charges](#)
- [Editorial Board](#)
- [Indexing](#)
- [Peer Review Process](#)
- [Submit Manuscript](#)

Why Us

- ✔ Open Access
- ✔ Peer-reviewed
- ✔ Rapid publication
- ✔ Lifetime hosting
- ✔ Free indexing service
- ✔ Free promotion service
- ✔ More citations
- ✔ Search engine friendly



**Himalayan Journal of
Community Medicine
and Public Health**

ISSN Print : 2709-3522 | ISSN Online
2709-3530

Frequency : Bi-Monthly
Language : English
Origin : Kuwait

[Online Submission](#) ↗

Impact Factor	No data
First Publication	N/A
Publication Count	116
Citation Count	N/A
Downloads/Articles	146
Citations/Articles	N/A

AIM

The main objective of the journal is to deal with the health issues related to the public and community as a whole which involves efforts to control infection, maintain proper sanitation, imparting health education and enhancing the provision of health care services to the communities and related research which is in need to take the research at an international level. In order to achieve this, it is important to bring the research to the scientific community across the globe in order to advance the knowledge and understanding of the health sector with a bias to community medicine and primary health care from all stakeholders....

SCOPE

Nipah Virus, COVID-19(Corona Virus), Henipa Viruses, Antibiotic Resistance, Breastfeeding, Behavioural Health, Clinical Trials, Community Engagement, Community Health, Child/Adolescent Health, Chronic Diseases, Disease Transmission, Health Informatics, Health Care Management, Health Care Quality, Efficiency, Human Nutrition, Immunization, Maternal & Child Health, Primary Healthcare, Public Health, Reproductive Health, Sexually-Transmitted Infections, Vaccination

ABOUT THE JOURNAL

About the Journal "Himalayan Journal of Community Public Health" Abbreviated Key Title: Hmlyan Jr Comm Pub Hlth.; ISSN Print : 2709-3522 | ISSN Online : 2709-3530 Open Access is peer reviewed, Bi-Monthly, open access Academic and Research Journal Published by Inlight Publisher, Kuwait. This Journal publishes Original Research Articles, Review Articles, Case Studies, Editorial Comments and other scientific studies within all the fields of medical sciences.

SUBMIT MANUSCRIPT

Journal Impact Factor No data

Manuscript can be submitted at <https://www.inlightpublisher.com/submit-manuscript> or send as an e-mail attachment to the Editorial Office at inlightpublisher@gmail.com

TRACK MANUSCRIPT

Enter Correct Manuscript Reference Number:

[Get Details](#)

RECENTLY PUBLISHED ARTICLES

Operational Overview of Nursing Activities Case Study in the Inpatient Unit of Dharmais Cancer Hospital Jakarta

Aswin Griksa Fitranto, Posma Sariguna Johnson Kennedy, Sri Pare Eni
Himalayan Journal of Community Medicine and Public Health | Volume:3 | Issue:5 | Oct. 20, 2022

DOI: 10.47310/Hjcmph.2022.v03i05.010

A Cross Sectional Study to Evaluate the Complementary Feeding Knowledge among Reproductive Age Group Females in Himachal Pradesh

A B Kiran and M Tenzin
Himalayan Journal of Community Medicine and Public Health | Volume:3 | Issue:5 | Oct. 20, 2022

DOI: 10.47310/Hjcmph.2022.v03i05.009

Assessment of Severity of Diabetic Retinopathy (DR), Central Macular Thickness (CMT), Clinically Significant Macular Edema (CSME) and Best Corrected Visual Acuity (BCVA) Among Patients of Type 2 Diabetes Mellitus Present At Ophthalmology OPD of Tertiary Care Center

Dr. Punam and Dr. Vinod Kashyap
Himalayan Journal of Community Medicine and Public Health | Volume:3 | Issue:5 | Sept. 20, 2022

DOI: 10.47310/Hjcmph.2022.v03i05.008

[Home](#)[Journals](#)[For Authors](#) ▾[For Editors](#) ▾[For Reviewers](#) ▾[Membership](#) ▾[Payments](#)[About](#)

Publication Policies & Ethics

- [Author Role](#)
- [Editor Role](#)
- [Reviewer Role](#)
- [Publisher Role](#)

Useful Links

- [Journal Home](#)
- [Aim & Scope](#)
- [Article Archives](#)
- [Article Processing Charges](#)
- [Editorial Board](#)
- [Indexing](#)
- [Peer Review Process](#)
- [Submit Manuscript](#)

Why Us

- ✔ Open Access
- ✔ Peer-reviewed
- ✔ Rapid publication
- ✔ Lifetime hosting
- ✔ Free indexing service
- ✔ Free promotion service
- ✔ More citations
- ✔ Search engine friendly



Himalayan Journal of Community Medicine and Public Health

ISSN Print : 2709-3522 | ISSN Online : 2709-3530

Frequency : Bi-Monthly
Language : English
Origin : Kuwait

[Online Submission](#) ↗

Impact Factor	No data
First Publication	N/A
Publication Count	116
Citation Count	N/A
Downloads/Articles	146
Citations/Articles	N/A

EDITORIAL BOARD

EDITOR-IN-CHIEF



Dr. Hardik Prajapati

*Dental Surgeon, Community health centre,
Borsad District, AnandGujarat, India*

EDITORIAL BOARD



Dr. Olumide Abiodun
Associate Editorial Board
Department of
Community Medicine,
Babcock University
Teaching Hospital,
Ilishan, Ogun State



Dr. Purushottam A. Giri
Associate Editorial Board
Associate Professor,
Dept. of Community
Medicine, Rural Medical
College of Pravara,
Institute of Medical
Sciences (Deemed
University), Loni,
Maharashtra, India



Mrs. Emily Nyangena
Associate Editorial Board
Sociology (Community
Development & Project
Management), St. Paul's
University, Nakuru Town
campus, Kenya



Prof. (Dr) Bishnu Ram Das
Associate Editorial Board
Professor and Head,
Department Of
Community Medicine,
Jorhat Medical College,
Jorhat -785001, Assam,
India



Prof. Dr Mohammad Mohsin Khan
Associate Editorial Board
Professor of Community
Medicine , Niazi Medical
College, Sargodaha,
Pakistan,



Prof. Dr. Rajendra Singh
Associate Editorial Board
Professor & Head,
Department of
Community Medicine,
Government SDJH
Medical College,
Chandeswar, Azamgarh
276128, UP, India,



Dr. Asmaa ghareeb Mohamed
Associate Editorial Board
Associate professor,
Applied Medical Sciences
College, Hafr Albatin
University, Assam



Prof. Roberto Romeo
Associate Editorial Board
Associated Professor of
the University of
Messina, Organic



Dr. Aly Hassan Aly Nada
Associate Editorial Board
Department of
Pharmaceutics, Faculty
Of Pharmacy, Kuwait

*University, Assiut
professor of community
Health Nursing, Faculty
of Nursing, Assiut
University, Egypt,*

*Chemistry at the faculty
of Pharmacy, Italy*

*University, Safat-13110,
Kuwait*



Dr. Resmi Mustarichie
*Associate Editorial Board
Head of Pharmaceutical
Chemistry, Faculty of
Pharmacy, Universitas
Padjadjaran, Indonesia*

[Home](#)[Journals](#)[For Authors](#) ▾[For Editors](#) ▾[For Reviewers](#) ▾[Membership](#) ▾[Payments](#)[About](#)

Publication Policies & Ethics

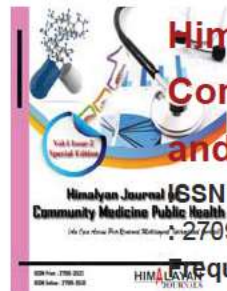
- [Author Role](#)
- [Editor Role](#)
- [Reviewer Role](#)
- [Publisher Role](#)

Useful Links

- [Journal Home](#)
- [Aim & Scope](#)
- [Article Archives](#)
- [Article Processing Charges](#)
- [Editorial Board](#)
- [Indexing](#)
- [Peer Review Process](#)
- [Submit Manuscript](#)

Why Us

- ✔ Open Access
- ✔ Peer-reviewed
- ✔ Rapid publication
- ✔ Lifetime hosting
- ✔ Free indexing service
- ✔ Free promotion service
- ✔ More citations
- ✔ Search engine friendly



Himalayan Journal of Community Medicine and Public Health

ISSN Print : 2709-3522 | ISSN Online : 2709-3530

Frequency : Bi-Monthly
Language : English
Origin : Kuwait

[Online Submission](#) ↗

Impact Factor	No data
First Publication	N/A
Publication Count	116
Citation Count	N/A
Downloads/Articles	146
Citations/Articles	N/A

INDEXING

Himalayan Journal of Community Medicine and Public Health has been indexed by the following database. For more information, please access the link below:
















ICI World of Journals(/search/form) / **Himalayan Journal of Community Medicine and Public Health**[← Back](#)

Himalayan Journal of Community Medicine and Public Health

**English title:**

Himalayan Journal of Community Medicine and Public Health

ISSN:

2709-3522 (print), 2709-3530 (online)

GICID:*n/d***DOI:***n/d***Website:**<https://himjournals.com/journal/hjcmph>(<https://himjournals.com/journal/hjcmph>)**Publisher:**

Inlight Publisher

Country:

KW

Language of publication:*n/d***Deposited publications:0** > Full text: 0% | Abstract: 0% | Keywords: 0% | References: 0%[Issues and contents](#)[Journal description \(\)](#)[Details \(\)](#)[Scientific profile\(\)](#)[Editorial office\(\)](#)[Publisher \(\)](#)[Metrics \(\)](#)

The main objective of the journal is to deal with the health issues related to the public and community as a whole which involves efforts to control infection, maintain proper sanitation, imparting health education and enhancing the provision of health care services to the communities and related research which is in need to take the research at an international level. In order to achieve this, it is important to bring the research to the scientific community across the globe in order to advance the knowledge and understanding of the health sector with a bias to community medicine and primary health care from all stakeholders. Nipah Virus, COVID-19 (Corona Virus), Henipa Viruses, Antibiotic Resistance, Breastfeeding, Behavioural Health, Clinical Trials, Community Engagement, Community Health, Child/Adolescent Health, Chronic Diseases, Disease Transmission, Health Informatics, Health Care Management, Health Care Quality, Efficiency, Human Nutrition, Immunization, Maternal & Child Health, Primary Healthcare, Public Health, Reproductive Health, Sexually-Transmitted Infections, Vaccination

Non-indexed in the ICI Journals Master List 2021

Main page (<http://jml.indexcopernicus.com>) . Rules

Evaluation pending
(http://indexcopernicus.com/images/PDF/Regulamin_serwisu_internetowego.pdf) . Privacy policy

(http://indexcopernicus.com/images/PDF/Polityka_prywatnosci.pdf) . Return policy

(http://indexcopernicus.com/images/PDF/Polityka_zwrotow.pdf)

MSHE points: n/d

© **Index Copernicus 2022**

INDEX  COPERNICUS

I N T E R N A T I O N A L

(<http://indexcopernicus.com>)

[Home](#)[Journals](#)[For Authors](#) ▼[For Editors](#) ▼[For Reviewers](#) ▼[Membership](#) ▼[Payments](#)[About](#)

Peer review process of Inlight Publisher

All submissions are made to the Director of Inlight Publisher and Forwarded to journal-specific chief editors. The paper is first subjected to anti-plagiarism check. If the paper is found to be plagiarized, it is rejected and immediate communication made to the author to revise or resubmit or make other decisions. If it is plagiarism free, the editor deletes the authors' details, codes it and sends the coded manuscript to three reviewers of the Particular Subject. Once the reviewers are through, they send back the manuscript to the editor with comments and the author is given a chance to make corrections as per the reviewers' directions. After revision, the authors return the revised manuscript to the editor who forwards them again to the first reviewers and the process begins again.

The process is repeated until the reviewers and the editor are convinced that the manuscript is ready for publication.

As in the fast track process we hired special reviewers. Once the article submission is done we will check its plagiarism and if plagiarism found less than 15% forwarded to the Reviewer for urgent review and then send to editor for final verification.

Note: that papers can be rejected at any stage should the author fail to make corrections as guided.

Track your Manuscript

Enter Correct Manuscript Reference Number:

[Get Details](#)

Browse Subjects

[Agriculture](#)
[Business](#)
[Management](#)
[Education and](#)
[Literature](#)
[Medical Sciences](#)
[Nursing](#)

Review Form

Manuscript No: HJCMPH-138-2022

Reviewer No: 0138

Manuscript Title:

Operational Overview of Nursing Activities Case Study in the Inpatient Unit of Dharmais Cancer Hospital Jakarta

Evaluation to the editor (Please mark the respective boxes)

Criteria	Evaluation				
	Acceptable			currently not acceptable	
	Very good	Good	Small Weaknesses	Great Weaknesses ¹⁾	absolutely insufficient
1. The relevance of the research problem for the discipline.	<input type="checkbox"/>	<input type="checkbox"/>	<input type="checkbox"/>	<input type="checkbox"/>	<input type="checkbox"/>
2. Introduction (research aims and contribution, relevant literature, etc.)	<input type="checkbox"/>	<input type="checkbox"/>	<input checked="" type="checkbox"/>	<input type="checkbox"/>	<input type="checkbox"/>
3. Conceptual quality (framework, theory, hypotheses, etc.)	<input checked="" type="checkbox"/>	<input type="checkbox"/>	<input type="checkbox"/>	<input type="checkbox"/>	<input type="checkbox"/>
4. Methodological quality (design, sample, measurement, method, etc.)	<input checked="" type="checkbox"/>	<input type="checkbox"/>	<input type="checkbox"/>	<input type="checkbox"/>	<input type="checkbox"/>
5. Results (novelty, interpretation, discussion flow, etc.)	<input type="checkbox"/>	<input checked="" type="checkbox"/>	<input type="checkbox"/>	<input type="checkbox"/>	<input type="checkbox"/>
6. Discussion (quality and novelty of conclusions and suggestions, etc.)	<input checked="" type="checkbox"/>	<input type="checkbox"/>	<input type="checkbox"/>	<input type="checkbox"/>	<input type="checkbox"/>
7. Readability	<input type="checkbox"/>	<input checked="" type="checkbox"/>	<input type="checkbox"/>	<input type="checkbox"/>	<input type="checkbox"/>

Overall evaluation (Please mark the respective box)

<input checked="" type="checkbox"/> 1	<input type="checkbox"/> 2	<input type="checkbox"/> 3	<input type="checkbox"/> 4	<input type="checkbox"/> 5
Acceptable for publication without changes	Acceptable for publications after minor revisions	Acceptable for publication after major revisions	Not acceptable for publication, but author(s) should be encouraged to resubmit	reject

Detailed comments/recommendations to the author(s)

(Please use numbers for each comment due to an easier response on issues done.)

Major concerns and improvement suggestions.

1. N/A

2. N/A

Minor concern and improvement suggestions.

1.

2.

(Select A/B/C/D/E)

Samim Ahmed

Samim Ahmed
(Director, IARCON International LLP)

NB: Reviewer Name and Affiliation is hidden and you can track Reviewer Comment from through article Tracking Number

Home

Journals

For Authors ▾

For Editors ▾

For Reviewers ▾

Membership ▾

Payments

About

Himalayan Journal of Community Medicine and Public Health

Volume:3-Issue:5

Evaluation of Rescue Analgesic Requirement in Ultrasound Guided 4-in-1 Nerve Block with Bupivacaine in Combination with Dexmedetomidine in Two Doses for Knee and Below Knee Orthopaedic Surgeries

Dr. Urvashi Nautiyal, Dr. Nee iksha and Dr. Isha Khan

Himalayan Journal of Community Medicine and Public Health | Volume:3 | Issue:5 | Sept. 10, 2022

DOI: 10.47310/Hjcmph.2022.v03i05.003

31 Downloads 56 Views

Fibreoptic Assessment of Three Different Techniques of I-Gel Insertion I.E. Standard, Rotational, Triple Airway Maneuver in Anaesthetised Paralyzed Adults

Dr. Neetiksha, Dr. Isha Khan and Dr. Urvashi Nautiyal

Himalayan Journal of Community Medicine and Public Health | Volume:3 | Issue:5 | Sept. 10, 2022

DOI: 10.47310/Hjcmph.2022.v03i05.004

24 Downloads 53 Views

Assessment of Duration of Analgesia in Ultrasound guided 4-in-1 Nerve Block with Bupivacaine in Combination with Dexmedetomidine in Two Doses for Knee and Below Knee Orthopaedic Surgeries

Dr. Urvashi Nautiyal, Dr. Nee iksha and Dr. Isha Khan

Himalayan Journal of Community Medicine and Public Health | Volume:3 | Issue:5 | Sept. 10, 2022

DOI: 10.47310/Hjcmph.2022.v03i05.005

23 Downloads 56 Views

Evaluation of Sleep Pattern among School Going Children Residing in New Delhi: A Descriptive Cross-sectional Study

Dr. Aastha Sehgal, Dr. Archie Madan and Dr. Amit Sachdeva

Himalayan Journal of Community Medicine and Public Health | Volume:3 | Issue:5 | Sept. 10, 2022

DOI: 10.47310/Hjcmph.2022.v03i05.001

28 Downloads 69 Views

Pattern of Screen Hours among School Going Children Residing in New Delhi: A Descriptive Cross-sectional Study

Dr. Aastha Sehgal, Dr. Archie Madan and Dr. Amit Sachdeva

Himalayan Journal of Community Medicine and Public Health | Volume:3 | Issue:5 | Sept. 10, 2022

DOI: 10.47310/Hjcmph.2022.v03i05.002

30 Downloads 67 Views

Operational Overview of Nursing Activities Case Study in the Inpatient Unit of Dharmais Cancer Hospital Jakarta

Aswin Griksa Fitranto, Posma Sariguna Johnson Kennedy, Sri Pare Eni

Himalayan Journal of Community Medicine and Public Health | Volume:3 | Issue:5 | Oct. 20, 2022

DOI: 10.47310/Hjcmph.2022.v03i05.010

16 Downloads 35 Views

A Cross Sectional Study to Evaluate the Complementary Feeding Knowledge among Reproductive Age Group Females in Himachal Pradesh

A B Kiran and M Tenzin

Himalayan Journal of Community Medicine and Public Health | Volume:3 | Issue:5 | Oct. 20, 2022

DOI: 10.47310/Hjcmph.2022.v03i05.009

18 Downloads 32 Views

Hazard Identification and Risk Assessment of Workers in the Welding Informal Industry in Greater Bandung, Indonesia

Suherdin, Agung Sutriyawan and Abdillah Ardi Natanegara

Himalayan Journal of Community Medicine and Public Health | Volume:3 | Issue:5 | Sept. 20, 2022

DOI: 10.47310/Hjcmph.2022.v03i05.007

39 Downloads 63 Views

Complementary Alternative Medicine: Ethnographic Review

Sahar Hassan, Ebrahim Ahmed elsamahy, Mostafa Shaban and Mushtaq Talib Mahdi

Himalayan Journal of Community Medicine and Public Health | Volume:3 | Issue:5 | Sept. 10, 2022

DOI: 10.47310/Hjcmph.2022.v03i05.006

35 Downloads 96 Views

Assessment of Severity of Diabetic Retinopathy (DR), Central Macular Thickness (CMT), Clinically Significant Macular Edema (CSME) and Best Corrected Visual Acuity (BCVA) Among Patients of Type 2 Diabetes Mellitus Present At Ophthalmology OPD of Tertiary Care Center

Dr. Punam and Dr. Vinod Kashyap

Track your Manuscript

Enter Correct Manuscript Reference Number

Get Details

Browse Subjects

[Home](#)
[Journals](#)
[For Authors](#)
[For Editors](#)
[For Reviewers](#)
[Membership](#)
[Payments](#)
[About](#)

Track your Manuscript

Enter Correct Manuscript Reference Number:

[Get Details](#)

Browse Subjects

[Agriculture](#)
[Business Management](#)
[Education and Literature](#)
[Medical Sciences](#)
[Nursing](#)

[Go Back](#) | Himalayan Journal of Community Medicine and Public Health | Volume:3 Issue:5 | Oct. 20, 2022

[16 Downloads](#)
[35 Views](#)

DOI : 10.47310/Hjcmph.2022.v03i05.010

[Download PDF](#)
[HTML](#)
[XML](#)

Operational Overview of Nursing Activities Case Study in the Inpatient Unit of Dharmais Cancer Hospital Jakarta

Aswin Griksa Fitranto, Posma Sariguna Johnson Kennedy*, Sri Pare Ani
 Universitas Kristen Indonesia, Jakarta Indonesia

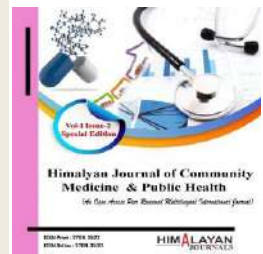
*Corresponding Author

Posma Sariguna Johnson Kennedy

[Article History:](#) | [Received: 18 09 2022](#) | [Accepted: 10 10 2022](#) | [Published: 20 10 2022](#)

Abstract: The importance of measuring the time spent on nursing activities and other processes makes the purpose of this study to identify the time of direct and indirect nursing care in the inpatient unit of Dharmais Cancer Hospital Jakarta. The type of this research is quantitative, with the statistical method used is descriptive statistics. It conducted this research with a work sampling approach by observing the activities carried out by nurses while in the inpatient treatment room for 24 hours. The results of this study show that nursing activities take an almost equal portion to indirect nursing activities. It is due to the possibility that the classification of inpatient patients is independent. Nurses should be able to analyze the level of patient dependence to provide nursing actions according to the patient's condition and ultimately improve the healing process and client satisfaction.

Keywords: Cancer Hospital, Nursing Activities, Direct Nursing Activities, Indirect Nursing Activities, Inpatient Unit



Research Article

Operational Overview of Nursing Activities Case Study in the Inpatient Unit of Dharmais Cancer Hospital Jakarta

Aswin Griksa Fitranto, Posma Sariguna Johnson Kennedy*, Sri Pare Ani

Universitas Kristen Indonesia, Jakarta Indonesia

*Corresponding Author

Posma Sariguna Johnson Kennedy

Article History: | Received: 18.09.2022 | Accepted: 10.10.2022 | Published: 20.10.2022 |

Abstract: The importance of measuring the time spent on nursing activities and other processes makes the purpose of this study to identify the time of direct and indirect nursing care in the inpatient unit of Dharmais Cancer Hospital Jakarta. The type of this research is quantitative, with the statistical method used is descriptive statistics. It conducted this research with a work sampling approach by observing the activities carried out by nurses while in the inpatient treatment room for 24 hours. The results of this study show that direct nursing activities take an almost equal portion to indirect nursing activities. It is due to the possibility that the classification of inpatient ward patients is independent. Nurses should be able to analyze the level of patient dependence to provide nursing actions according to the patient's condition and ultimately improve the healing process and client satisfaction.

Keywords: Cancer Hospital, Nursing Activities, Direct Nursing Activities, Indirect Nursing Activities, Inpatient Unit.

Copyright @ 2022: This is an open-access article distributed under the terms of the Creative Commons Attribution license which permits unrestricted use, distribution, and reproduction in any medium for non commercial use (NonCommercial, or CC-BY-NC) provided the original author and source are credited.

INTRODUCTION:

The hospital is a form of health facility that carries out basic health efforts, or referral health and supporting health efforts. The quality of excellent hospital services marks the success of hospitals in carrying out their functions. The most dominant factor affecting quality is human resources. Among the human resources directly involved in providing services to patients, the most numerous are nurses and midwives, which is about 40% of the total workforce. We achieve the goal of effective and efficient nursing services. It is necessary to match the nursing staff, including the number, type, and qualifications, with the required service needs (Depkes-RI, 2022). (Adawiyah, Thamrin, & Djafar, 2012).

In the world of hospitals, it is required to make changes to prepare products and human resources that are competitive in the face of free competition in the global markets. Nursing services in hospitals have a very strategic position because the service process is carried out continuously for 24 hours. Hence, the good and bad services in hospitals depend on the performance of the nursing staff who provide nursing care to patients or families. Nursing service activities are a subsystem of health services that assist patients in maintaining health or recovering. The patient's need for dependence on nursing staff fluctuates according to the patient's condition. It affects the number of human resources (nurses) needed to provide nursing care to patients properly and correctly. (Susanto, 2002)

The implementation of health services in hospitals is very complex. In addition to the characteristics and organization, the demand that health workers follow dynamic health science and technology adds to the complexity of providing standard quality health services. "Minimum service standards are provisions regarding the type and quality of basic services, which are mandatory government affairs that every citizen has the right to obtain at a minimum" (Kemenkes-RI, 2016). The benefit of realizing a good management system is the increased efficiency, effectiveness, and productivity of staff at the hospital. Hariyati (2014) said that effectiveness and efficiency are two interrelated components in achieving goals. Nursing management challenges are cost minimization and no waste in implementation, but simultaneously providing quality services is a challenge that must be faced (Verschueren, 2016).

The importance of measuring time spent on nursing documentation and other processes has prompted the following research question: "How much time is spent by nursing staff on direct and indirect patient care?" (Kakushi & Evora, 2014) Thus, this study to identify the timing of direct and indirect nursing care in the inpatient unit of Dharmais Cancer Hospital Jakarta. This research is part of the architectural research being carried out by the author. The data regarding the activities of nurses are very useful for spatial and building design that is edition in supporting the optimization of hospital services.

METHODOLOGY

The type of this research is quantitative, with the statistical method used is descriptive statistics. "The descriptive-analytic research design is a research design that intends to describe an object of research being studied through samples or data that have been collected and then conclude in general" (Sugiyono, 2013). This study only measures the use of working time carried out by nursing staff in providing nursing care services to patients.

This study is descriptive research with a work sampling approach. It was conducted to observe the activities carried out by nurses while in the treatment room for 24 hours. The room that became the place of observation was the inpatient room of the Dharmais Cancer Hospital Jakarta. Observations were made using the nurse's activity observation sheet by counting the number of nursing care activities. Observations began after the nurse expressed her willingness to contribute to the study. Nurses who became the subject of observation activities were randomly assigned so that the observed nurses did not know and did not feel disturbed. The sample observed in this study were nurses' activities included in the nursing care category, including direct, indirect, and personal activities. The sample population in this study were all nurse activities in each shift in each Inpatient Room at the time of observation.

DISCUSSION

Nurse Activities

The model of providing nursing care must be based on the role of direct and indirect care. The role of direct nursing care is facilitated and depends on management. "The role of direct care is assessment, monitoring, prioritizing goals, care coordination, therapeutic intervention, evaluation, communication, and patient education" (Huber, 2006). "Nurses provide direct care with a special relationship with physical, psychological, and spiritual needs" (Nursalam, 2016). "The level of patient dependence on nurses can be classified into four groups: self-care, partial care, total care, and intensive care" (Kartika, Erwin, & Lestari). Nurses' direct and indirect activities are influenced by several factors, namely patient dependence (Myny *et al.*, 2011), human

resource factors (Hernández-Cruz, 2017), and communication skills.

The imbalance of the ratio between nurses and patients will cause fatigue in nurses. The workload is strongly influenced by the ratio of nurses to patients. The workload is a collection of activities an organization must complete within a certain period. Fatigue, if it occurs in the long term, will cause a decrease in performance. Gholizadeh *et al.* (2014) found a significant relationship between fatigue and workload. The challenge for hospitals now is how to provide effective and efficient services. Hospitals must transform into smart, safe, friendly, and quality hospitals with infrastructure supporting and implementing effective and efficient operations (Novia & Putri, 2017). Efficiency is needed to see a massive transformation in all hospital service systems. The health care industry is expected to change its service mindset. Without change, the service will not change the situation but only carry out routines without having a significant impact. Hospitals must begin to develop information technology which will certainly impact improving quality services (Indrarta, 2016). (Wijayanti, 2019)

The complexity of care activities in the room is influenced by the number of patients per day as indicated by the bed occupancy rate, commonly known as the Bed Occupancy Rate (BOR). An excessive number of patients can lead to increased nursing activities (Al-Kandari & Thomas, 2009; Myny *et al.*, 2011). The classification of inpatients is dominated by independent and partial dependence, which will impact the complexity of the nurse's activities (Mueller *et al.*, 2010). The higher the level of patient dependence or, in other words, the level of total independence, the patient will require absolute nursing intervention in every need. In contrast, if the patient's level of dependence is mild or independent, it will impact the nurse's interventions for patients. Nurses will provide minimal intervention because patients can perform daily activities with minimal assistance.

An indirect activity often carried out by nurses is documentation of nursing care. It happens because the documentation system is still mostly done manually, so nurses must write a lot. In addition to documentation, nurses must also be involved in patient administration activities and coordination between teams, such as with the laboratory, radiology, or other departments. Research conducted by Hendrich (2008) also states that documentation is an activity that is mostly carried out in 36 hospitals where research is carried out with a time of 80.6%. In addition to documentation activities, coordination was also reported to be an activity that nurses often carried out by 69.2%. Most of these activities are carried out in the nurse's room and a small part in the patient care room. (Wijayanti, 2019)

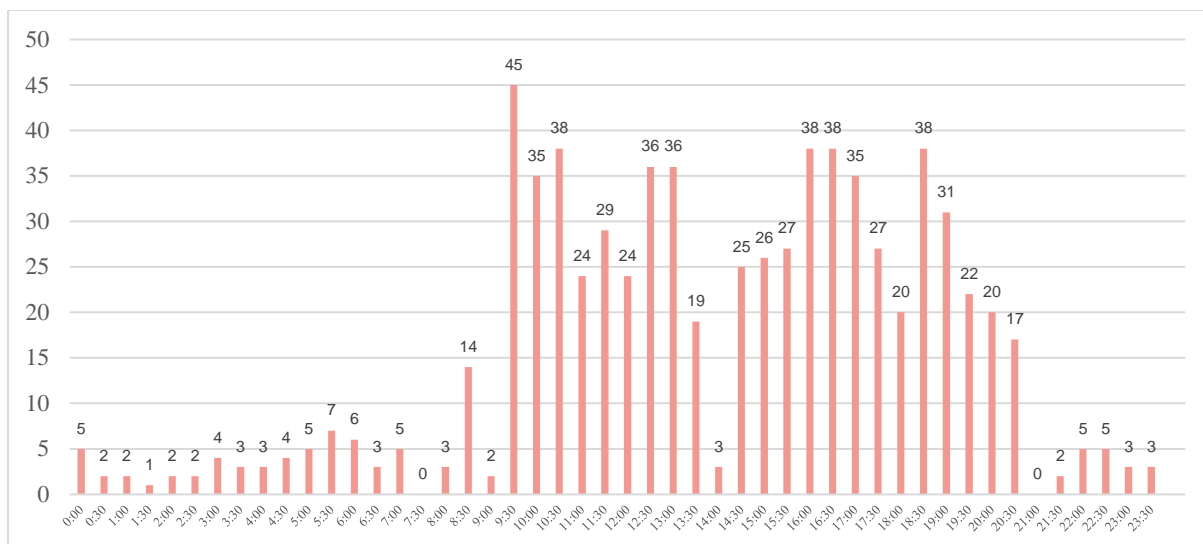
Ria (2012), in her research in the Inpatient Room of Hermina Podomoro Hospital, stated that the implementing nurses carried out more indirect activities when compared to direct activities. Research by Heydari & Tabari (2015) suggests more time spent on indirect activities when compared to direct activities. Implementing fewer direct activities than indirect ones can be caused by the work system that applies in the hospital (Ria, 2012). The work system includes the absence of special personnel who handle administrative problems and the lack of " standard operational procedure " actions. The work requires repetition, which should do once. A Sick Helper (POS) can also affect the quantity of interaction between nurses and patients. If there is no clear job description division regulation, the activities of nurses and POS can overlap. Nurses may overuse POS so that nurses will rarely interact with patients.

The results of Robot's (2009) research stated that in the morning shift, nurses did a lot of activities for patients, while in the afternoon and evening shifts, the activities carried out were a continuation of the morning shift activities. However, Ria's (2012) research results

show that nurses do many direct nursing activities on the night shift. It is because, at night, the nurse's shift is longer than other shifts, which is 10 hours, so nurses can have more time to meet patient needs. Patients often look for nurses on the night shift, especially if the infusion runs out. In addition, nurses on the night shift must also take the examination sample. Even so, indirect activities on the night shift are still higher than direct activities. (Wijayanti, 2019)

Nurse's Direct Activities

Nurses' direct activities are carried out to patients through direct interaction, social interaction, and counseling actions. Direct activities include communication, health education, providing food and drink, assisting patients' hygiene, administering medication, and performing routine procedures. Direct care activities are care provided by nurses that are specifically related to physical, psychological, and spiritual needs. The following is shown in Figures 1 and 2 below, in the form of an observations diagram of direct nursing activities in the inpatient room at the Dharmais Cancer Hospital Jakarta for 24 hours.



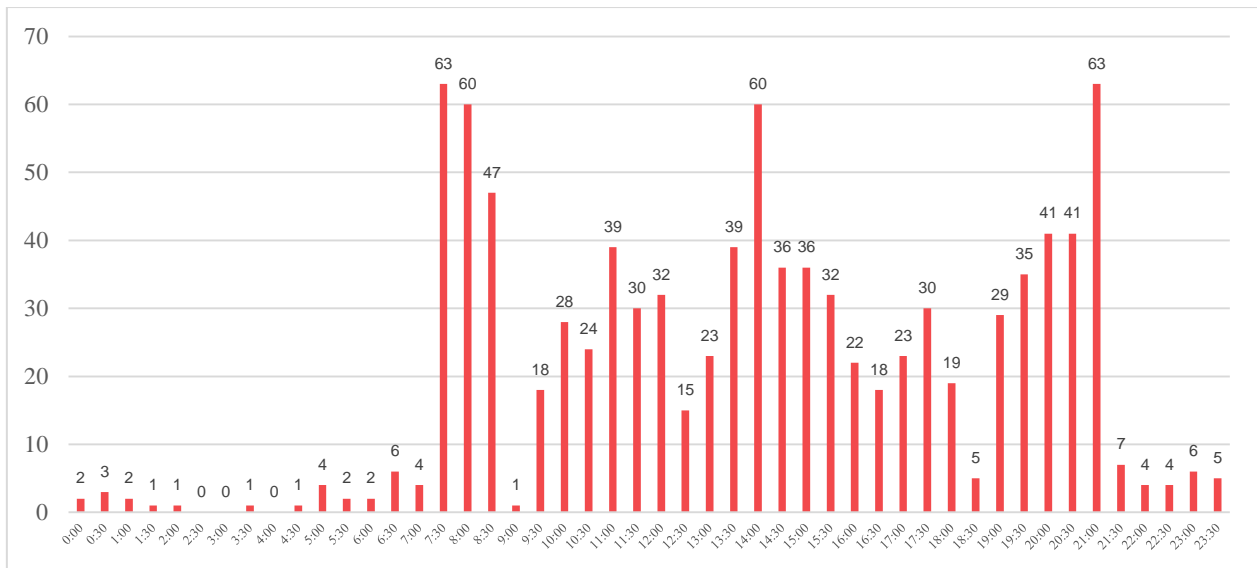
Source: Data Processing Results, 2022

Figure 1. Observations of Direct Nursing Activities in the Inpatient Room for 24 Hours

Nurse's Indirect Activities

Nurses carry out indirect activities to support the patient's healing process without direct interaction or action from the patient. Indirect activities include patient administration, coordination with other departments, specimen couriers or examination results,

and consultation with doctors or other teams. The following is shown in Figures 3 and 4 below, in the form of an observations diagram of indirect nursing activities in the inpatient room of the Dharmais Cancer Hospital Jakarta for 24 hours.

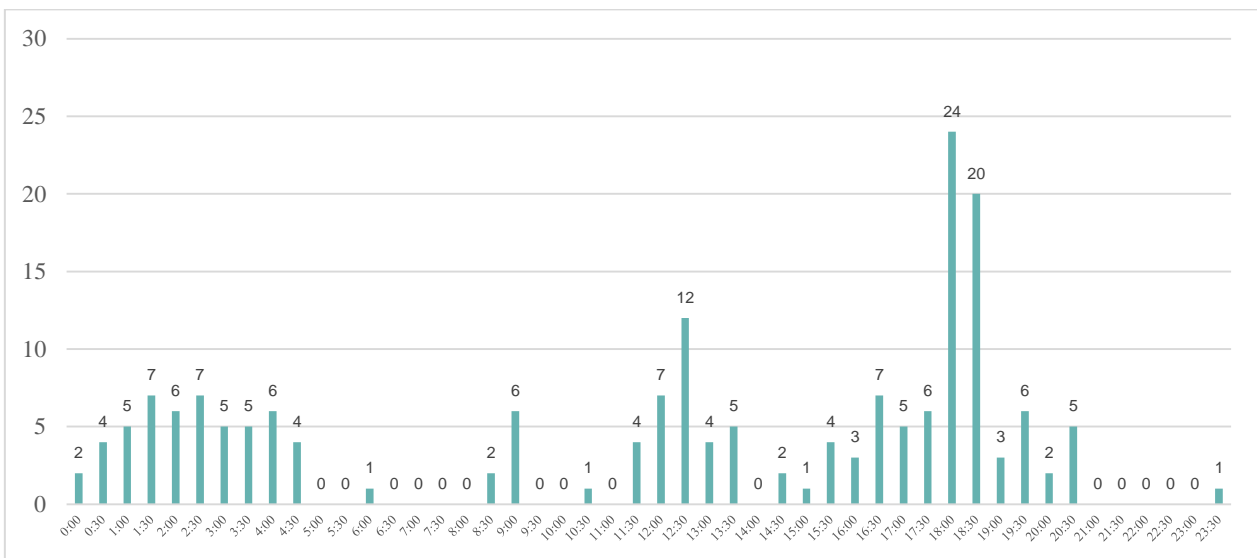


Source: Data Processing Results, 2022
Figure 2. Observations of Indirect Nursing Activities in the Inpatient Room for 24 Hours

Nurse's Personal Activities

Nurses carry out personal activities that do not involve their work in supporting the patient's healing process (non-nursing). These activities include resting, eating and drinking, praying, and going to the toilet.

The following is shown in Figures 5 and 6 below, in the form of an observations diagram of the personal activities of nurses (non-nursing) in the inpatient room at Dharmais Cancer Hospital Jakarta for 24 hours.

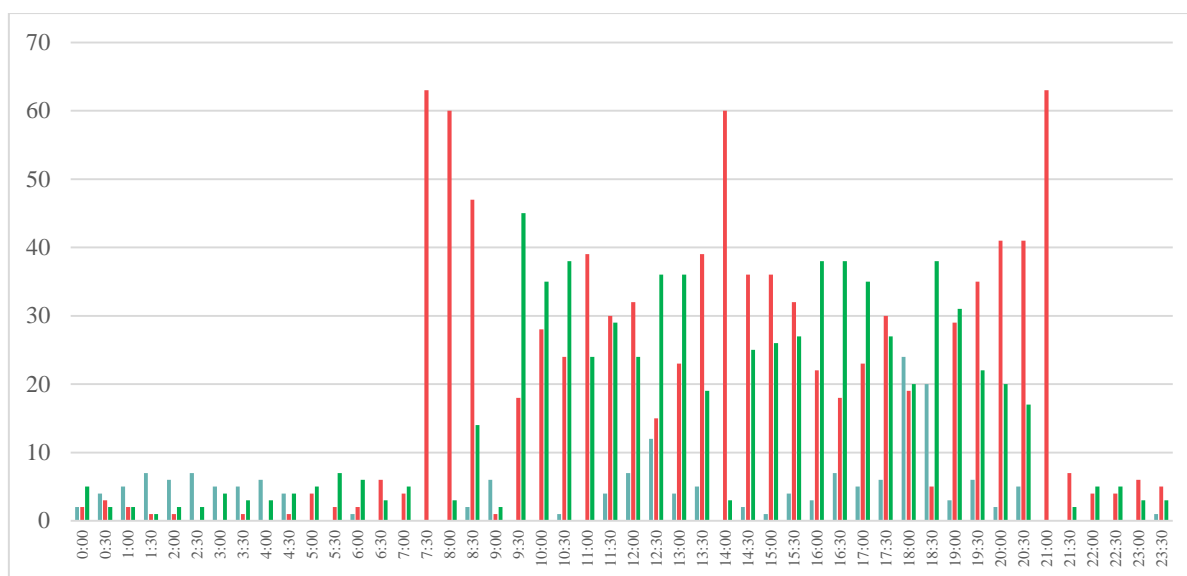


Source: Data Processing Results, 2022
Figure 3. Observations of Nurses' Activities in the Inpatient Room for 24 Hours

Overall Activities (Combined)

The following is shown in Figure 7 below, in the form of an observations diagram of all nursing and non-

nursing activities in the inpatient room at Dharmais Cancer Hospital Jakarta for 24 hours.



Source: Data Processing Results, 2022

Note: Blue Bar=Personal Activities; Red Bar=Indirect Maintenance Activities; Green Bar=Direct Care Activities.

Figure 4. Observations of All Nursing Activities in the Inpatient Room for 24 Hours

The study found that direct nursing activities (green bars) were almost equal to indirect nursing activities (red bars). However, there are differences in the portion of direct, indirect, and non-nursing activities (blue bars) from each observation time:

- In the morning, around 9.30-13.00, it is dominated by direct nursing activities. Back in the afternoon, around 16.00-19.00, it was dominated by direct nursing activities. From the early hours until the morning, from 00.00-07.00, direct nursing activities are much more dominant than indirect nursing activities.
- Indirect dominant activities occur from 07.30-08.30, 13.00-15.30, and 19.30-23.30.
- Non-nursing activities such as personal use are mostly carried out in the early morning when the patient sleeps, which is 00.00-04.30. And in the afternoon at 11.30-13.30, the highest during rest time is between 18.00-19.00.

The balance of direct and indirect activities is possible because the classification of inpatient ward patients is independent—the more independent the patient, the less need for nurse intervention.

One of the developments to make the health care sector more efficient is using technology that continues to evolve. It must pay attention to electronic health systems for documenting patient information and data. "Information technology systems provide easy access to information, the possibility of data sharing, simultaneous access to information by multiple professionals, legibility, and integration with other health information systems. They also reduce the time spent documenting patient care activities" (Galvão & Ricarte, 2012). It also reduces the time spent documenting patient care activities (Hannah, Ball,

Edwards, 2009; Peres & Leite, 2010). The advantages and benefits of electronic systems have been widely studied by various authors (Galvão & Ricarte, 2012; Hannah, Ball, Edwards, 2009; Peres & Leite, 2010). However, several studies report insufficient evidence regarding the time spent on nursing documentation in electronic systems and their impact on patient care (Madorum & Shaw, 2010; Ammenwerth, 2011). (Wijayanti, 2019)

Every employee has a different motivation that they want to achieve. The number of direct and indirect activities is certainly not the only thing that must consider in assessing a person's performance, especially in achieving patient satisfaction. Even a lot of interaction with the patient, if done without purpose and effective communication, will only worsen the relationship. However, the good quality of the nurse-patient relationship will be able to create overall satisfaction if the nurse has a good leadership spirit. Altman & Rosa (2015) stated that nurses need to flashback to the figure of Florence Nightingale, who raised the nursing profession by making innovation breakthroughs. Florence spends her time dedicated and making good changes. Altman & Rosa (2015) said that good service is not about the number of indirect or non-productive activities nurses carry out but what contribution they can make in their profession. (Wijayanti, 2019)

CONCLUSION

This study only measures the use of working time carried out by nursing staff in providing nursing care services to patients. The results of this study show that direct nursing activities take an almost equal portion to indirect nursing activities. The classification of inpatient room patients at Dharmais Cancer Hospital Jakarta is independent.

Nursing managers should pay more attention to the immediate nursing needs of each patient. Nurses should be able to analyze the level of patient dependence so that nurses can analyze the level of patient development, provide nursing actions according to the patient's condition, and ultimately improve the healing process and client satisfaction. For administrative activities, transportation and patient couriers should be carried out by non-nursing staff, so that existing nursing staff can provide more nursing services to patients to improve the quality of nursing care. Hospitals also need to implement an integrated health information system to facilitate nurses in documentation activities so that services become more efficient. In addition, nurses must be given leadership training and effective communication to improve staff capabilities in human relationships.

Subsequent research can analyze factors related to the duration of time and quality of direct nursing care actions, such as compliance with standard operational procedures, nurses' skills in carrying out nursing actions, and nurses' level of understanding of a problem.

Acknowledgments

The authors would like to thank the Research Grants from "The Ministry of Education, Culture, Research, and Technology" (Simlitabmas Grant 2022) and "the Institute for Research and Community Service LPPM-UKI."

REFERENCES

1. Adawiyah R., Thamrin, Djafar L. (2012). Evaluasi pelayanan yang diberikan oleh perawat pada ruang kelas III Rumah Sakit Umum Daerah Dokter Soedarso. *Jurnal Tesis PMIS-UNTAN IAN*.
2. Al-Kandari F., and Thomas D. (2009). Perceived adverse patient outcomes correlated to nurses' workload in medical and surgical wards of selected hospitals in Kuwait. *Journal of Clinical Nursing*, 18(4), 581–590.
3. Altman M., Rosa W. (2015). Redefining 'time' to meet nursing's evolving demands. *Nursing Management. Springhouse*, 46(5), 46–50.
4. Ammenwerth E., Rauchegger F., Ehlers F., Hirsch B., Schaubmayr C. (2011). Effect of a nursing information system in the quality of information processing in nursing: an evaluation study using the HIS-monitor instrument. *Int J Med Inform*, 80(1), 25-38.
5. Depkes-RI. (2022). *Standar Tenaga Keperawatan di Rumah Sakit*. Direktorat Pelayanan Keperawatan Direktorat Jendral Pelayanan Medik, Departemen Kesehatan Jakarta.
6. Galvão MCB, Ricarte ILM. (2012). Informatização. In: Galvão MCB, Ricarte ILM. *Prontuário do paciente*. Rio de Janeiro (RJ): Guanabara Koogan, 31-54.
7. Gholizadeh M., Janati A., Kabiri N., Nadimi B., and Abri S. (2014). How Do Nurses Spend Their Time in The Hospital? *Journal of Clinical Research & Governance*, 3(1), 27–33,
8. Hannah K.J, Ball M.J, Edwards M.J.A. (2009). Aplicações na prática clínica baseada em unidade de cuidado. In: *Introdução à informática em enfermagem*. Porto Alegre: ArtMed, 123-36.
9. Haryati. (2014). *Perencanaan, Pengembangan dan Utilisasi Tenaga Keperawatan*. Jakarta: Rajawali Pers,
10. Hendrich A. (2008). A 36-Hospital Time and Motion Study: How Do Medical-Surgical Nurses Spend Their Time? *The Permanente Journal*, 12(3), 25–34.
11. Hernández-Cruz R., Moreno-Monsiváis M. G., Cheverría-Rivera S., & Díaz-Oviedo A. (2017). Factors influencing the missed nursing care in patients from a private hospital. *Revista Latino-Americana de Enfermagem*, 25(0).
12. Heydari F, Tabari R. (2015). Identify direct and indirect nursing care time in a medical and surgical ward. *Journal Holist Nursing Midwifery*, 25(1), 1–9.
13. Huber L. (2006). *Leadership and Nursing Management Care*. Philadelphia: Saunders Elsevier.
14. Indrarta W. (2016). Editorial Tantangan Rumah Sakit. *Berkala Ilmiah Kedokteran Duta Wacana*, 02(01),2-4.
15. Kakushi L.E., Evora Y.D.M. (2014). Direct and indirect nursing care time in an intensive care unit. *Rev. Latino-Am. Enfermagem*, 22(1):150-157.
16. Kartika D., Erwin, and Lestari. (2013). Analisa Jam Perawatan Langsung Pada Pasien Bedah di Ruang Cendrawasih. *Jurnal keperawatan*.
17. Kemenkes-RI. (2016). *Peraturan Menteri Kesehatan RI Nomor 43 tahun 2016 tentang Standar Pelayanan Minimal Bidang Kesehatan*. Jakarta: Depkes RI.
18. Madorum R.L, Shaw N.T. (2010). The impact of a critical care information system (CCIS) on time spent charting and direct patient care by staff in the ICU: a review of the literature. *Int J Med Inform*, 78 (7), 435-45.
19. Mueller M., Lohmann S., Strobl R., Boldt C., and Grill E. (2010). Patients' functioning as a predictor of nursing workload in acute hospital units providing rehabilitation care: A multi-center cohort study. *BMC Health Services Research*, 10(1), 295.
20. Myny D., Van G.D., Gobert M., Vanderwee K., Van H.A., Defloor T. (2011). Non-direct patient care factors influencing nursing workload: A review of the literature. *Journal of Advanced Nursing*, 67(10), 2109–2129.
21. Novia D., and Putri W.D. (2017). Ini Tantangan Rumah Sakit Era JKN. *Republika Online*, Retrieved from <http://nasional.republika.co.id/berita/nasional/umum/17/08/29/ovgd1f359-ini-tantangan-rumah-sakit-era-jkn>
22. Nursalam. (2015). *Manajemen Keperawatan: Aplikasi dalam Praktik Keperawatan Profesional*. Edisi 5. Jakarta: Salemba Medika.

23. Peres H.H.C, Leite M.M.J. (2010). *Sistemas de informação em saúde*. In: Kurggant P. *Gerenciamento em enfermagem*. Rio de Janeiro: Guanabara Koogan, 63-70.
24. Ria S. (2012). *Analisis Kebutuhan Tenaga Perawat di Ruang Rawat Inap Anak RSIA Hermina Podomoro*. Universitas Indonesia.
25. Robot J.M.F. (2009). *Analisis Beban Kerja Perawat Pelaksana Dalam Mengevaluasi Kebutuhan Tenaga Perawat di Ruang Rawat Inap Rumah Sakit Umum Prof dr R. D. Kandou Manado*.
26. Sugiyono. (2013). *Statistika untuk Penelitian*. Jakarta: IKAPI.
27. Susanto A. (2002). *Analisis terhadap aktivitas keperawatan kaitannya dengan beban kerja perawat di Ruang Rawat Inap Kelas III Rumah Sakit Karya Medika Bekasi*. Tesis Fakultas Kesehatan Masyarakat Universitas Indonesia, Jakarta.
28. Verschueren M. (2016). *A Review on Leadership of Head Nurses and Patient Safety and Quality of Care*. Bingley: Emerald Pub.
29. Wijayanti E.T. (2019). *Gambaran kegiatan langsung dan tidak langsung perawat di rumah sakit pemerintah kota Kediri*. *JuKe*, 3(1), 63-69.

Turnitin Operational Overview of Nursing Activities Case Study in the eInpatient

by Posma Sariguna Johnson Kennedy

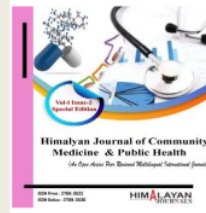
Submission date: 03-Apr-2023 12:29PM (UTC+0700)

Submission ID: 2054322132

File name: 881.pdf (1.08M)

Word count: 3968

Character count: 21215

**Research Article****Operational Overview of Nursing Activities Case Study in the Inpatient Unit of Dharmais Cancer Hospital Jakarta**

Aswin Griksa Fitranto, Posma Sariguna Johnson Kennedy*, Sri Pare Eni
Universitas Kristen Indonesia, Jakarta Indonesia

*Corresponding Author

Posma Sariguna Johnson Kennedy

Article History Received: 18.09.2022 | Accepted: 10.10.2022 | Published: 20.10.2022

Abstract: The importance of measuring the time spent on nursing activities and other processes makes the purpose of this study to identify the time of direct and indirect nursing care in the inpatient unit of Dharmais Cancer Hospital Jakarta. The type of this research is quantitative, with the statistical method used is descriptive statistics. It conducted this research with a work sampling approach by observing the activities carried out by nurses while in the inpatient treatment room for 24 hours. The results of this study show that direct nursing activities take an almost equal portion to indirect nursing activities. It is due to the possibility that the classification of inpatient ward patients is independent. Nurses should be able to analyze the level of patient dependence to provide nursing actions according to the patient's condition and ultimately improve the healing process and client satisfaction.

Keywords: Cancer Hospital, Nursing Activities, Direct Nursing Activities, Indirect Nursing Activities, Inpatient Unit.

Copyright @ 2022: This is an open-access article distributed under the terms of the Creative Commons Attribution license which permits unrestricted use, distribution, and reproduction in any medium for non commercial use (NonCommercial, or CC-BY-NC) provided the original author and source are credited.

INTRODUCTION:

The hospital is a form of health facility that carries out basic health efforts, or referral health and supporting health efforts. The quality of excellent hospital services marks the success of hospitals in carrying out their functions. The most dominant factor affecting quality is human resources. Among the human resources directly involved in providing services to patients, the most numerous are nurses and midwives, which is about 40% of the total workforce. We achieve the goal of effective and efficient nursing services. It is necessary to match the nursing staff, including the number, type, and qualifications, with the required service needs (Depkes-RI, 2022). (Adawiyah, Thamrin, & Djafar, 2012).

In the world of hospitals, it is required to make changes to prepare products and human resources that are competitive in the face of free competition in the global markets. Nursing services in hospitals have a very strategic position because the service process is carried out continuously for 24 hours. Hence, the good and bad services in hospitals depend on the performance of the nursing staff who provide nursing care to patients or families. Nursing service activities are a subsystem of health services that assist patients in maintaining health or recovering. The patient's need for dependence on nursing staff fluctuates according to the patient's condition. It affects the number of human resources (nurses) needed to provide nursing care to patients properly and correctly. (Susanto, 2002)

The implementation of health services in hospitals is very complex. In addition to the characteristics and organization, the demand that health workers follow dynamic health science and technology adds to the complexity of providing standard quality health services. "Minimum service standards are provisions regarding the type and quality of basic services, which are mandatory government affairs that every citizen has the right to obtain at a minimum" (Kemenkes-RI, 2016). The benefit of realizing a good management system is the increased efficiency, effectiveness, and productivity of staff at the hospital. Hariyati (2014) said that effectiveness and efficiency are two interrelated components in achieving goals. Nursing management challenges are cost minimization and no waste in implementation, but simultaneously providing quality services is a challenge that must be faced (Verschuere, 2016).

TurnitinOperationalOverviewofNursingActivitiesCaseStudyint...

ORIGINALITY REPORT

6%

SIMILARITY INDEX

7%

INTERNET SOURCES

8%

PUBLICATIONS

2%

STUDENT PAPERS

PRIMARY SOURCES

1

www.revistas.usp.br

Internet Source

4%

2

knepublishing.com

Internet Source

2%

Exclude quotes On

Exclude matches < 2%

Exclude bibliography On